

## LED Framing Projector

### C74



**Specify:**

C74 - - - - -

FIXTURE MODEL LUMENS ADAPTER VOLTAGE CRI CCT FINISH

**Example:**

C74 L1800 9TC A 92 30 P

This Litelab fixture features quality optics, precision image projection and an even field. The ultra-high-efficiency LED allows maximum light output from a small fixture. The CREE CXB engine is available in a range of color temperatures and produces high CRI and R9 values.

LUMENS-CRI	COLOR TEMPERATURE (CCT) (select one)			INPUT REQUIREMENTS		
	120V	240V	277V	120V	240V	277V
1800-92	27 (2700K)	30 (3000K)	35 (3500K)	0.3A/26W	0.2A/26W	0.2A/26W
1300-92	27 (2700K)	30 (3000K)	35 (3500K)	0.2A/18W	0.1A/18W	0.1A/18W
1600-98	27 (2700K)	30 (3000K)	35 (3500K)	0.3A/26W	0.2A/26W	0.2A/26W
1100-98	27 (2700K)	30 (3000K)	35 (3500K)	0.2A/18W	0.1A/18W	0.1A/18W

## Features & Benefits

### Fixture Description

Single piece die-cast aluminum fixture body allows for high efficiency passive cooling. Deep regressed LED and optic designed for maximum glare control. Shutter release and locking designed for ease of use and comfort. Aspherical and Fresnel lensing provides crisp image projection and an even field of light.

### Framing

Provides accurate adjustable framing for a variety of applications, at a broad range of distances. Shutter release and locking mechanism ensures easy adjustability of frame and consistency of framing over time. Adjustable focus provides smooth or sharp framing edge.

### Gobo

Custom-cut Gobos available for image projection. A wide variety of narrow beam-angle pin-spot gobos are also available on request. Please consult the factory for more information about our Gobo offering.

### Lenses & Accessories\*\*

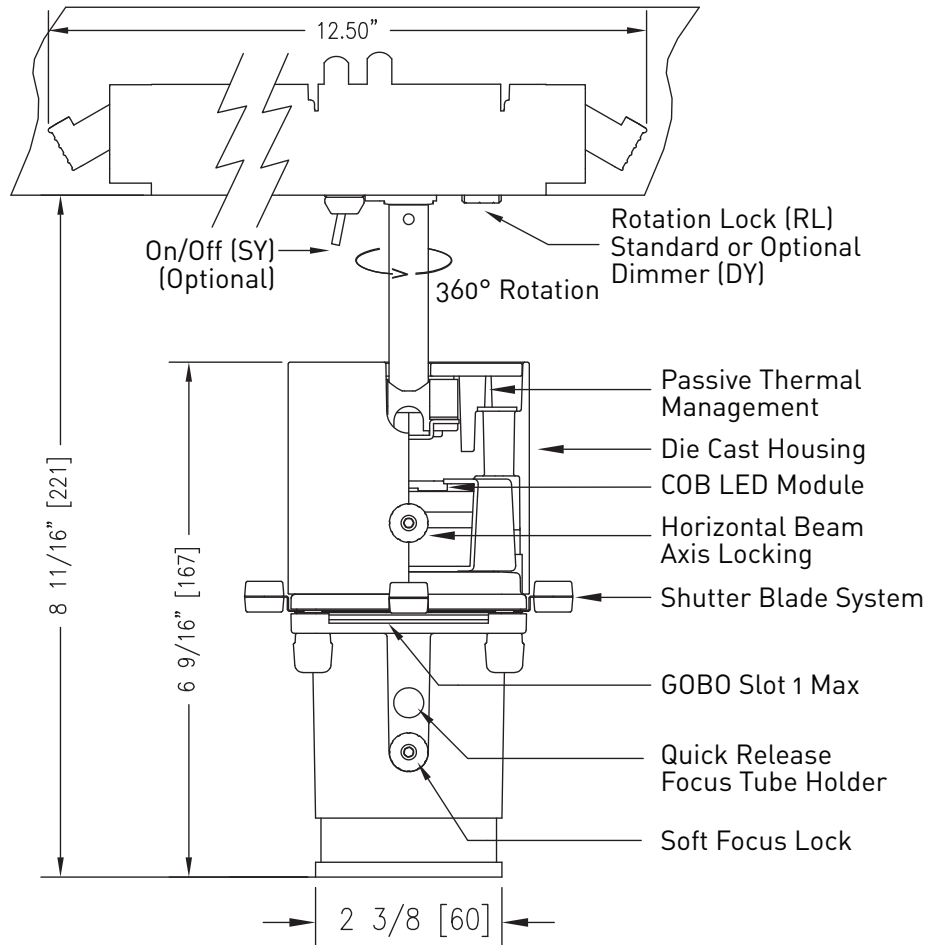
Available with 11, 22, 33 and 54 degree focusing cylinders and optional laser-cut gobos for narrow beam-angles or image projections

### Finishes

Available in white, black and custom finish.

### Dimming

This fixture is provided with an LED Driver suitable for trailing edge dimming. Dimming performance may vary based on dimmer model or system being used. If exact performance is required, Litelab recommends testing the Litelab fixture and specified dimmer.



# Input Fittings & Accessories

C74

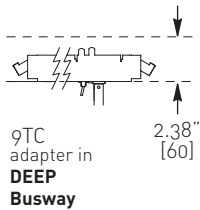
Job Name:

Fixture Type:

## ADAPTERS

### BUSRUN

adapter code	on-off switch (no dimmer) optional	on-board dimmer w/ on-off switch optional	rotation lock* standard	voltage
--------------	---------------------------------------	--	----------------------------	---------



9TC  -SY  -DY  -RL **-A**  
fused Lock n Hide fitter with integral driver for use with **Deep 120V** BusRun busway

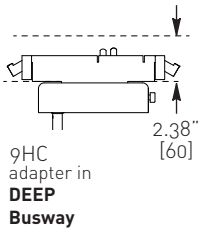
9HC  -SY  -DY **-D**  
fused Lock n Hide fitter with integral driver for use with **Deep 240V** "3D" 2-conductor BusRun busway

9TD  -SY  -DY  -RL **-A**  
fused plug-in fitter with integral driver for use with **Deep 120V** BusRun busway

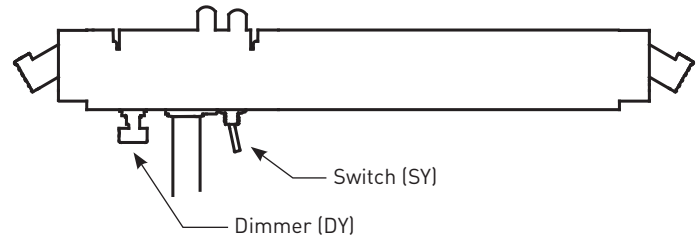
9HD  -SY  -DY **-D**  
fused plug-in fitter with integral driver for use with **Deep 240V** "3D" 2-conductor BusRun busway

9HC  -SY  -DY **-F**  
fused Lock n Hide fitter with integral driver for use with **Deep 240V** "2D" or "6D" 3-conductor BusRun busway

9HD  -SY  -DY **-F**  
fused plug-in fitter with integral driver for use with **Deep 240V** "2D" or "6D" 3-conductor BusRun busway



### DY-SY FITTER DETAIL (120 VOLT ONLY)



### FINISHES

Consult with Litelab for other finishes

- P** White
- MB** Black
- CP** Custom Finish

### CORD & PLUG OPTIONS

Consult factory.

### FOOT CANDLE CHART

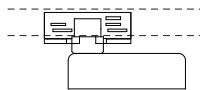
Distance	FWHM	FC @ CL*	ø Beam [Inch]	Largest Sq [Inch]
3'	11°	4450	6.9	4.9 x 4.9
	22°	1740	13.9	9.8 x 9.8
	33°	752	21.3	15 x 15
	54°	221	24.4	17.29 x 17.29
4'	11°	2205	9.2	6.5 x 6.5
	22°	872	18.6	13.1 x 13.1
	33°	360	28.4	20.1 x 20.1
	54°	118	36.6	25.9 x 25.9
5'	11°	1360	11.5	8.1 x 8.1
	22°	530	23.3	16.4 x 16.4
	33°	239	35.5	25.1 x 25.1
	54°	73	48.9	34.5 x 34.5
6'	11°	895	13.8	9.8 x 9.8
	22°	348	27.9	19.7 x 19.7
	33°	162.5	42.6	30.1 x 30.1
	54°	49.7	61.1	43.2 x 43.2
7'	11°	631	16.1	11.4 x 11.4
	22°	248	32.6	23 x 23
	33°	110	49.7	35.1 x 35.1
	54°	36.5	74.5	52.2 x 52.2
8'	11°	481	18.4	13 x 13
	22°	187	37.2	26.3 x 26.3
	33°	90	56.8	40.21 x 40.21
	54°	27.9	85.9	60.5 x 60.5
9'	11°	372	20	14.7 x 14.7
	22°	144	41.9	29.6 x 29.6
	33°	69.2	63.9	45.2 x 45.2
	54°	22.2	97.7	69.1 x 69.1
10'	11°	292	23.1	16.3 x 16.3
	22°	117	46.6	32.9 x 32.9
	33°	56.2	71	50.2 x 50.2
	54°	17.8	110	75.4 x 75.4
11'	11°	239	25.4	17.9 x 17.9
	22°	95.5	51.3	36.2 x 36.2
	33°	45.3	78	55.2 x 55.2
	54°	14.9	122.2	86.4 x 86.4
12'	11°	199	27.7	19.6 x 19.6
	22°	79.8	55.9	39.5 x 39.5
	33°	38	85.3	60.3 x 60.3
	54°	12.2	134.5	95.1 x 95.1

\* When DY option is specified, RL rotation lock feature is not available.

### EUTRAC (120V, 240V)

2-3 Circuit

adapter code	data bus contacts optional	on-board dimmer w/ on-off switch optional	voltage
--------------	-------------------------------	--	---------



E2  DB  -DY-SY **-A**  
track adapter for use with 2-circuit Eutracs

E3  DB  -DY-SY **-D**  
track adapter for use with 3-circuit Eutracs

- When specifying data bus contacts, indicate control protocol.
- Data bus contacts cannot be used on fixture with an on-board dimmer.
- Fixtures with an on-board dimmer are not to be used on dimming circuits.

ACCESSORIES: Pinpoint Gobo	LL P/N	ø Aperture	LL#	LL#	LL#	LL#
			64506	64506-01	64506-02	64506-03
			11° Focus Tube	22° Focus Tube	33° Focus Tube	54° Focus Tube
64522-KIT			INCLUDES ALL LISTED APERTURES			
64522-12		Ø.125"	1'	2'	2'	5'
64522-25		Ø.25"	2'	3'	5'	10'
64522-37		Ø.375"	3'	5'	7'	14'
64522-50		Ø.50"	3.5'	7'	10'	19'
64522-62		Ø.625"	4'	9'	13'	24'
64522-75		Ø.75"	5'	10'	15'	28'
64522-87		Ø.875"	6'	12'	18'	33'
64522-10		Ø1.0"	7'	14'	20'	37'
64522-1.12		Ø1.125"	7.5'	15'	23'	41'
64522-1.25		Ø1.25"	8'	17'	25'	45'
64522-1.37		Ø1.37"	9'	19'	27'	48'
64522-1.50		Ø1.5"	10'	21'	30'	52'

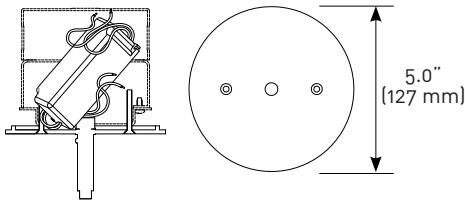
Optional Gobo Carrier #64514 accepts Ø37.5mm Gobos, Rosco Size [E]



ADAPTERS

CANOPY WITH POWER SUPPLY (120V, 277V, 240V)

- 3L-A 120V
- 3L-D 240V



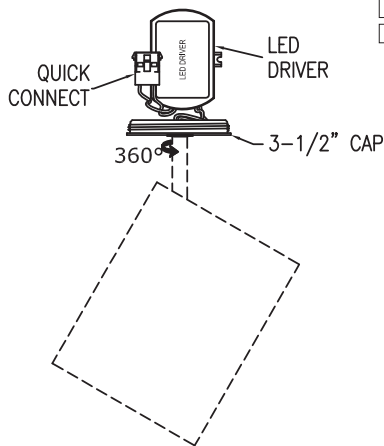
5" (127mm) diameter x 1/4" (6mm) height machined canopy with electronic low-voltage power supply. (Junction box by others.)

The number of electrical boxes shown is for reference only, and is the minimum required to fit the power supply indicated. Add extension boxes as necessary to meet the volume requirement based on wire fill as defined by National Electrical Code, Article 314.

3-1/2" QUICK CONNECT CANOPY

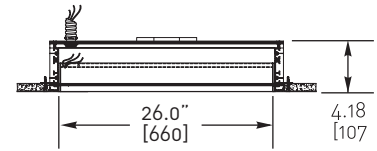
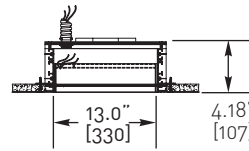
3-1/2" canopy voltage

- 5L-A 120V
- 5L-D 240V



QC-5K kit is required with -5L fixture.

BUSPOINTS



- BP1-08-6A-13 120V
- BP1-08-3D-13 240V
- BP1-08-6D-13\* 240V
- BP1-08-6A-26 120V
- BP1-08-3D-26 240V
- BP1-08-6D-26\* 240V

\* (3-conductor, use "F" voltage code for fixture)

3-1/2" QUICK CONNECT FLANGE KIT

QC-5K kit for use with -5L fixture.

