

# Museum Collection Cylinder Series

Job Name:

Fixture Type:

## LED 10° to 30° Zoom

### C71



#### Specify:

 -  -  -  -  - 

FIXTURE MODEL   LUMENS   ADAPTER   VOLTAGE   CRI   CCT   FINISH

#### Example:

    -  -  -     - 

This Litelab fixture features a proprietary 10 to 30 degree optic for precision variable focus. The ultra-high-efficiency LED allows maximum light output from a small fixture. The CREE CXB engine is available in an architectural range of color temperatures and produces high CRI and R9 values.

LUMENS-CRI	COLOR TEMPERATURE (CCT)			INPUT REQUIREMENTS		
	(select one)			120V	240V	277V
1800-92	27 (2700K)	30 (3000K)	35 (3500K)	0.3A/26W	0.2A/26W	0.2A/26W
1300-92	27 (2700K)	30 (3000K)	35 (3500K)	0.2A/18W	0.1A/18W	0.1A/18W
1600-98	27 (2700K)	30 (3000K)	35 (3500K)	0.3A/26W	0.2A/26W	0.2A/26W
1100-98	27 (2700K)	30 (3000K)	35 (3500K)	0.2A/18W	0.1A/18W	0.1A/18W

## Features & Benefits

### Fixture Description

Single piece die-cast aluminum fixture body allows for high efficiency passive cooling. Deep regressed LED and optic designed for maximum glare control. Telescoping accessory holder allows for precision tool-less variable 10° to 30° focus.

### Flush Fit adapter with Rotation Lock \*

Adapter plugs into Busway with separate electrical and mechanical connections. When used with Deep Busway, Lock and Hide adapters recess entirely inside of Busway. Supplied with standard thumb wheel rotation lock, except on fixtures with optional on-board dimming. Available with on-off switch. Also available with fitters for other standard Litelab track systems.

### Accessory Cartridge

Holds one accessory selected from a range of lenses, filters and louvers.

### Zoom Mechanism

Rear-mounted beam adjustment allows the beam to be adjusted from 10° to 30° without tools, while maintaining accessory orientation. Integrated beam metering provides a precise understanding of actual beam degree.

### Lenses & Accessories\*\*

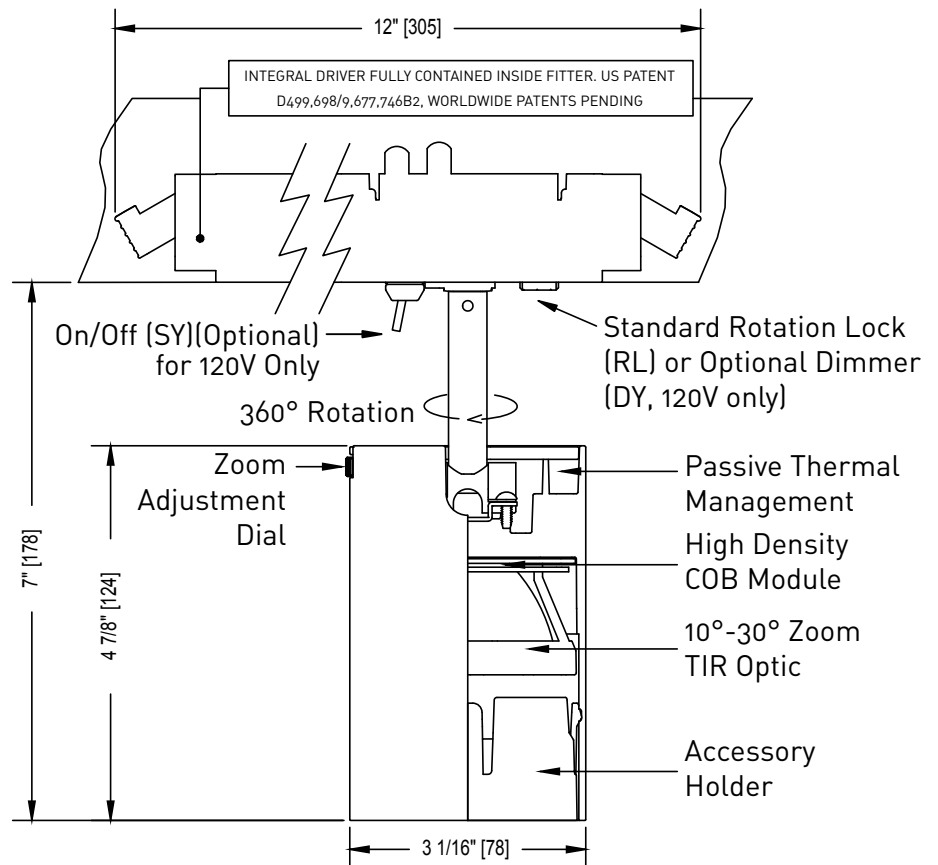
Standard clear lenses in 30° x 60°, 10° x 40° and 10° x 60° optical patterns. Beam softener lenses are also available. Accessory code shall be "g."

### Finishes

Available in white, black and custom finish.

### Dimming

This fixture is provided with an LED Driver suitable for trailing edge dimming. Dimming performance may vary based on dimmer model or system being used. If exact performance is required, Litelab recommends testing the Litelab fixture and specified dimmer.



251 Elm Street Buffalo, NY 14203 USA  
800-238-4120 • www.litelab.com © 04/21

\*Covered under one or more of the following patents: US: 8,740,421 B2, D499, 698, D389,012, Republic of China: D149,379, People's Republic of China: ZL 201130358013.3, European Union: RCD #001920356-0001. Additional patents pending. \*\*See fittings and accessories page for mounting options and accessories.

# Input Fittings & Accessories

C71

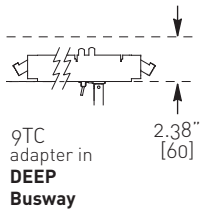
Job Name:

Fixture Type:

## ADAPTERS

### BUSRUN

adapter code	on-off switch (no dimmer) optional	on-board dimmer w/ on-off switch optional	rotation lock* standard	voltage
--------------	------------------------------------	---	-------------------------	---------



9TC  -SY  -DY  -RL **-A**

fused Lock n Hide fitter with integral driver for use with **Deep 120V** BusRun busway

9HC  -SY  -DY **-D**

fused Lock n Hide fitter with integral driver for use with **Deep 240V** "3D" 2-conductor BusRun busway

9TD  -SY  -DY  -RL **-A**

fused plug-in fitter with integral driver for use with **Deep 120V** BusRun busway

9HD  -SY  -DY **-D**

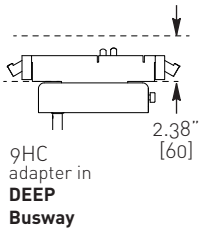
fused plug-in fitter with integral driver for use with **Deep 240V** "3D" 2-conductor BusRun busway

9HC  -SY  -DY **-F**

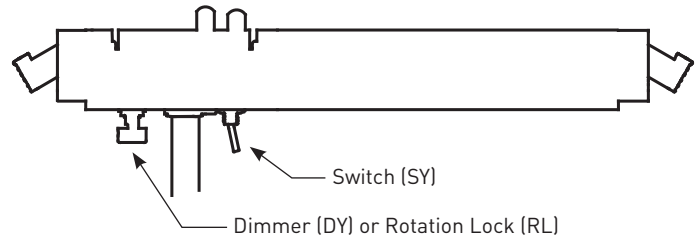
fused Lock n Hide fitter with integral driver for use with **Deep 240V** "2D" or "6D" 3-conductor BusRun busway

9HD  -SY  -DY **-F**

fused plug-in fitter with integral driver for use with **Deep 240V** "2D" or "6D" 3-conductor BusRun busway



### FITTER DETAIL (120 VOLT ONLY)



### ACCESSORIES

#### Spread Lenses

#### Linear Spread

- OL- 10° x 40°-g
- OL- 10° x 60°-g

#### Universal Spread

- OL- 30° x 60°-g

#### Beam Softener

- OL-TD-g (Textured Diffusion)
- OL-DF-g polycarbonate film

#### Cross Hair Baffle

- 64276-01-IM-CHB

#### Louvers

- LVH/g

### REFLECTORS

10° to 30° Adjustable Beam Spread

### FINISHES

Consult with Litelab for other finishes

- P** White
- MB** Black
- CP** Custom Finish

### CORD & PLUG OPTIONS

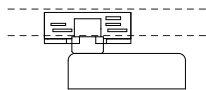
Consult factory.

\* When DY option is specified, RL rotation lock feature is not available.

### EUTRAC (120V, 240V)

2-3 Circuit

adapter code	data bus contacts optional	on-board dimmer w/ on-off switch optional	voltage
--------------	----------------------------	---	---------



E2  DB  -DY-SY **-A**

track adapter for use with 2-circuit Eutracs

E3  DB  -DY-SY **-D**

track adapter for use with 3-circuit Eutracs

- When specifying data bus contacts, indicate control protocol.
- Data bus contacts cannot be used on fixture with an on-board dimmer.
- Fixtures with an on-board dimmer are not to be used on dimming circuits.

### C71L1800 10° Setting

Mounting Height in feet	FC	Diameter in feet
6.0	916.0	1.1
8.0	515.3	1.5
10.0	329.8	1.8
12.0	229.0	2.2
14.0	168.2	2.6
16.0	128.8	2.9

### C71L1800 20° Setting

Mounting Height in feet	FC	Diameter in feet
6.0	687.3	1.2
8.0	386.6	1.6
10.0	247.4	2.0
12.0	171.8	2.4
14.0	126.2	2.8
16.0	96.7	3.3

### C71L1800 30° Setting

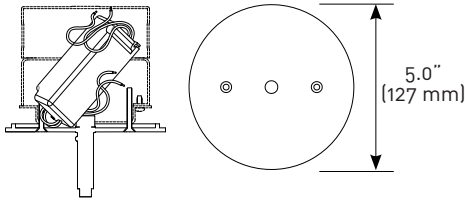
Mounting Height in feet	FC	Diameter in feet
6.0	283.7	1.4
8.0	159.6	1.9
10.0	102.1	2.3
12.0	70.9	2.8
14.0	52.1	3.3
16.0	39.9	3.8



**ADAPTERS**

**CANOPY WITH POWER SUPPLY (120V, 277V, 240V)**

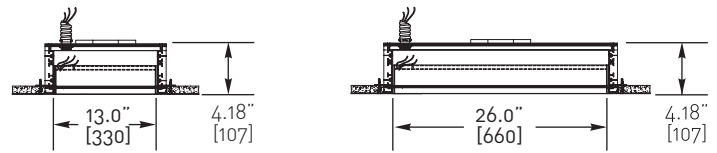
- 3L-A** 120V
- 3L-D** 240V



5" (127mm) diameter x 1/4" (6mm) height machined canopy with electronic low-voltage power supply. (Junction box by others.)

The number of electrical boxes shown is for reference only, and is the minimum required to fit the power supply indicated. Add extension boxes as necessary to meet the volume requirement based on wire fill as defined by National Electrical Code, Article 314.

**BUSPOINTS**

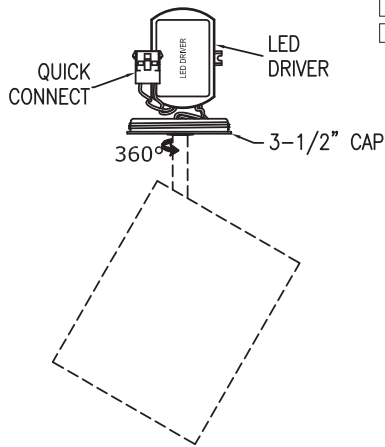


- BP1-08-6A-13** 120V
- BP1-08-3D-13** 240V
- BP1-08-6D-13\*** 240V
- BP1-08-6A-26** 120V
- BP1-08-3D-26** 240V
- BP1-08-6D-26\*** 240V

\* (3-conductor, use "F" voltage code for fixture)

**3-1/2" QUICK CONNECT CANOPY**

3-1/2" canopy voltage



- 5L-A** 120V
- 5L-D** 240V

**QC-5K** kit is required with -5L fixture.

**3-1/2" QUICK CONNECT FLANGE KIT**

**QC-5K** kit for use with -5L fixture.

