

198-50-0010-00 Recessed Spackle Flange Profile

For use with 230 / 233 series track for drywall ceiling installation. Dry area installation only.

Material:

Material is fabricated of raw aluminum with visible flanges.

Extruded aluminum profile length is 150" L that will accept 230 / 233 series ceiling mounted track. **(track ordered separate)**

Fasteners are supplied securing track to profile. Profile is secured above finished ceiling by securing directly to overhead support (not supplied) or by AC cable. (Cable must be ordered separate)

Options:

198-50-0016-00 L Coupler: 90 degree L Coupler (welded construction) is fabricated of the same material as spackle flange and secured with mechanical couplers. (ordered separate)

198-50-0017-00 T Coupler: T Coupler (welded construction) is fabricated of the same material as spackle flange profile and used at intersecting track sections secured with mechanical couplers. (ordered separate)

198-50-0018-00 X Coupler: X Coupler (welded construction) is fabricated of the same material as the spackle flange and used at multiple intersections of track secured with mechanical couplers. (ordered separate)

Accessories: (Ordered separate)

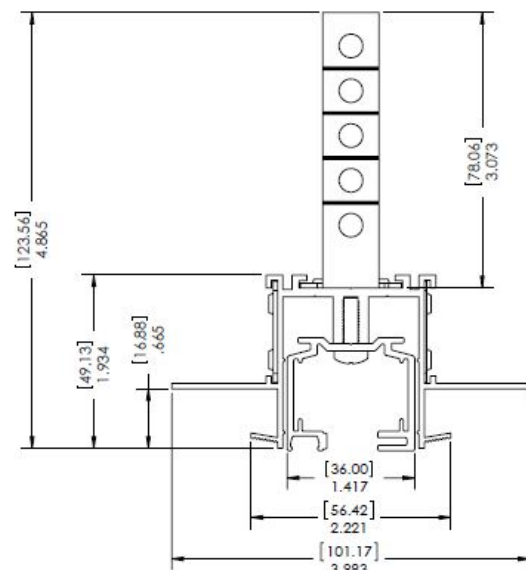
198-00-0033-00 Mechanical Coupler: 3 couplers are required at each joint location when splicing track profile. Each secured at 4

threaded points. Couplers are ordered individually. (Fasteners supplied)

198-00-0034-00 Feed in cap: Feed in cap is secured to the top of the spackle profile that is a guide for the conduit power supply. Hole is drilled in the profile to accept power. Secured at two threaded points. (Fasteners supplied) One required per power supply locations.

198-00-0037-00 Suspension Support: Support is required to make sure profile is properly supported and level with finished ceiling. Secured to profile at one threaded location. See chart for recommended supports required. Secured to profile at one threaded point. (Fastener supplied)

198-00-0036-00 End Cap: Fabricated of the same material as the spackle flange profile secured at two threaded points. One required at each recessed profile open end. (Fasteners supplied)



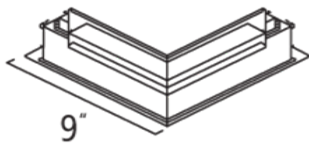
TRACK MUST BE ORDERED SEPARATE. FASTENERS SUPPLIED TO SECURE TRACK TO PROFILE

This information is subject to change without notice.

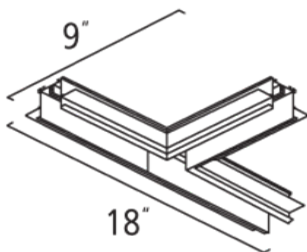
Cutting Profile / Track: Using a dry chop saw or hack saw with miter box cut all sides perpendicular to all sides to insure a flush fit with all accessories and spliced track sections. Do not cut track without above tools. **De-burr track & profile before assembling.**

NOTE: Add 3" to overall length of track when calculating length of profile to account for live end feed & end cap.

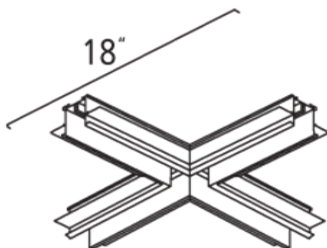
– **Profile Options & Accessories:** All accessories must be ordered as a separate item based on the qty's required per configurations.



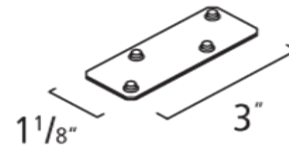
198-50-0016: "L" Coupler



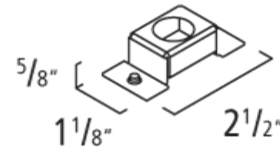
198-50-0017-00: "T" Coupler



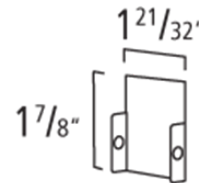
198-00-0018-00: "X" Coupler



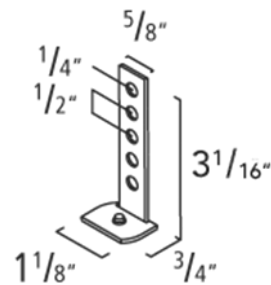
198-00-0033-00: Mechanical Coupler



198-00-0034-00: Feed in Cap



198-00-0036-00: End Cap



198-00-0037-00: Suspension Support
Supports required per track length.

SUSPENSION	12' TRACK	8' TRACK	4' TRACK
198-00-0037-00	8	6	3



Installation Instruction:

Track is only to be installed in use with other electrical fittings identified for use with the **EUTRAC 230 / 233** track series.

Track to be installed only by licensed electricians.

The installation and operation of all **EUTRAC** track systems are subject to national and local safety regulations.

The manufacturer is not liable for damage caused by improper use or installation of track system.

If any **EUTRAC** track system components are subsequently modified, the person(s) responsible for the modification shall be considered as the manufacturer.

It is the responsibility of the installer to ensure the electrical, mechanical and thermal compatibility of the track system and fittings.

Materials used for ceiling mounting should conform to local building code regulations.

It is essential to cover both ends of the track with end covers and / or protective caps.

The **EUTRAC** track system is not intended for use with a power supply cord or convenience receptacle adapter.

Safety Instructions:

Do not install this track system in damp or wet locations. (IP20, 45C max)

Do not install any part of the track system less than 5 ft above the finished floor.

Do not install any fixture assembly closer than 6" from any curtain or similar combustable material.

Disconnect electrical power and turn off wall switch before adding to or changing the configuration of the track.

Do not attempt to energize anything other than lighting track fixtures on the track system.

In order to reduce the risk of fire and electrical shock, do not attempt to connect power tools, extension cords, appliances etc to the track.

For track lighting systems other than 120V, 2~

Do not connect the track to more than the branch circuit unless the track is constructed so that it can be used with more than one branch circuit.

Check with qualified electricians, although the track lighting system may seem too operate corretly, a dangerous overload of the neutral may occur and result in a risk of fire.