

## LED Wallwash

### X02



#### Specify:

 -  -  -  -  - 

FIXTURE MODEL	LUMENS	ADAPTER	VOLTAGE	CRI	CCT	FINISH
---------------	--------	---------	---------	-----	-----	--------

#### Example:

  -  -  -   - 

This Litelab Fixture features a Xicato XTM module providing up to 2000 Lumens in a discreet 3" diameter cylinder. The Xicato XTM module provides up to 98 CRI with high R9 values and is available in 2700K, 3000K and 3500K. The CX72 provides even ceiling to floor wallwashing in ceilings up to 24'.

LUMENS-CRI	COLOR TEMPERATURE (CCT) (select one)			INPUT REQUIREMENTS		
	120V	240V	277V	120V	240V	277V
2000-98	27 (2700K)	30 (3000K)	35 (3500K)	0.22A/27W	0.11A/30W	0.10A/31W
1400-98	27 (2700K)	30 (3000K)	35 (3500K)	0.15A/18W	0.08A/19W	0.07A/19W

## Features & Benefits

### Fixture Description

Single piece die-cast aluminum fixture body allows for high efficiency passive cooling. Deep regressed LED and optic designed for maximum glare control. Fixture to be supplied with accessory holder and OL-30° x 60° wallwash spread lens.

### Flush Fit adapter with Rotation Lock \*

Adapter plugs into Busway with separate electrical and mechanical connections. When used with Deep Busway, Lock and Hide adapters recess entirely inside of Busway. Supplied with standard thumb wheel rotation lock, except on fixtures with optional on-board dimming. Available with on-off switch. Also available with fitters for other standard Litelab track systems.

### Accessory Cartridge

Holds one accessory selected from a range of lenses, filters and louvers.

### Lenses & Accessories\*\*

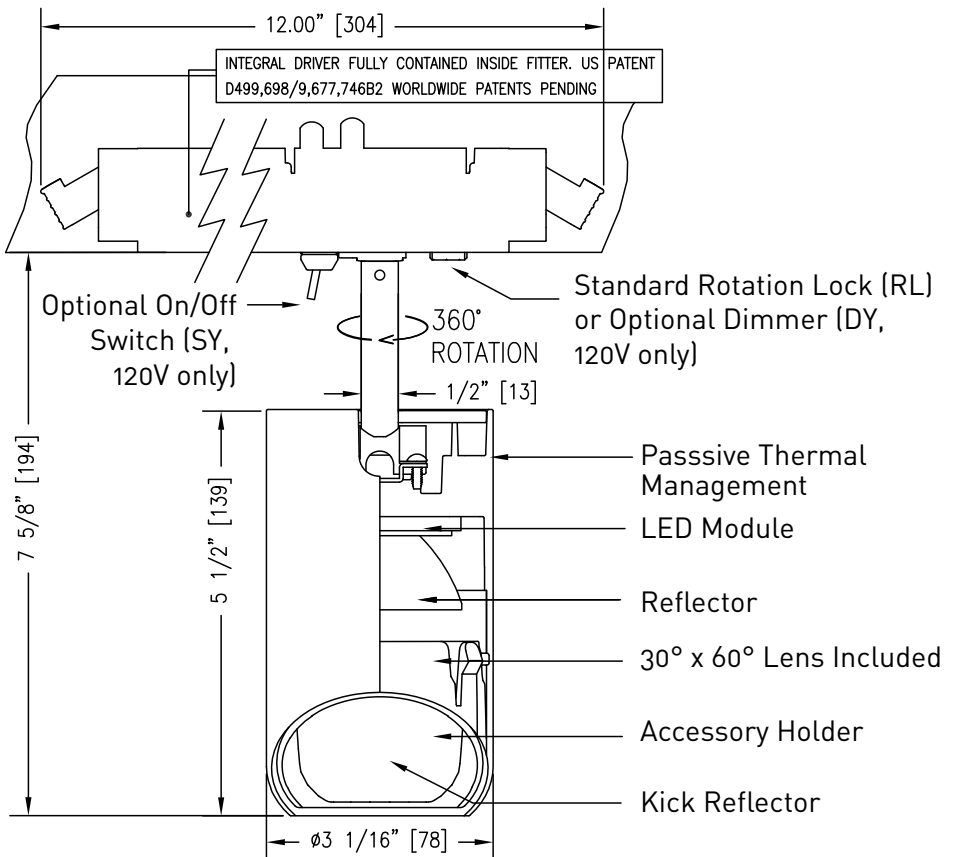
Standard wallwash spread lens included with fixture. Accessory code shall be "g".

### Finishes

Available in white, black and custom finish.

### Dimming

This fixture is provided with an LED Driver suitable for trailing edge dimming. Dimming performance may vary based on dimmer model or system being used. If exact performance is required, Litelab recommends testing the Litelab fixture and specified dimmer.



# Input Fittings & Accessories

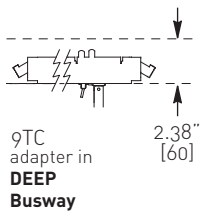
X02

Job Name:

Fixture Type:

## ADAPTERS

### BUSRUN



adapter code	on-off switch (no dimmer) optional	on-board dimmer w/ on-off switch optional	rotation lock* standard	voltage
--------------	---------------------------------------	--	----------------------------	---------

9TC  -SY  -DY  -RL **-A**  
fused Lock n Hide fitter with integral driver for use with **Deep 120V** BusRun busway

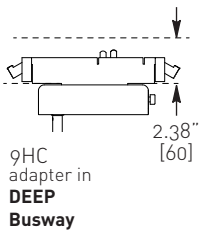
9HC  -SY  -DY **-D**  
fused Lock n Hide fitter with integral driver for use with **Deep 240V** "3D" 2-conductor BusRun busway

9TD  -SY  -DY  -RL **-A**  
fused plug-in fitter with integral driver for use with **Deep 120V** BusRun busway

9HD  -SY  -DY **-D**  
fused plug-in fitter with integral driver for use with **Deep 240V** "3D" 2-conductor BusRun busway

9HC  -SY  -DY **-F**  
fused Lock n Hide fitter with integral driver for use with **Deep 240V** "2D" or "6D" 3-conductor BusRun busway

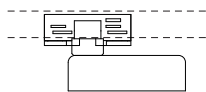
9HD  -SY  -DY **-F**  
fused plug-in fitter with integral driver for use with **Deep 240V** "2D" or "6D" 3-conductor BusRun busway



\* When DY option is specified, RL rotation lock feature is not available.

### EUTRAC (120V, 240V)

2-3 Circuit



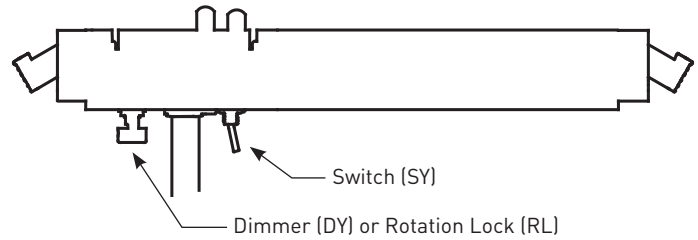
adapter code	data bus contacts optional	on-board dimmer w/ on-off switch optional	voltage
--------------	-------------------------------	--	---------

E2  DB  -DY-SY **-A**  
track adapter for use with 2-circuit Eutrac

E3  DB  -DY-SY **-D**  
track adapter for use with 3-circuit Eutrac

- When specifying data bus contacts, indicate control protocol.
- Data bus contacts cannot be used on fixture with an on-board dimmer.
- Fixtures with an on-board dimmer are not to be used on dimming circuits.

### FITTER DETAIL (120 VOLT ONLY)



### ACCESSORIES

Spread Lenses

#### Universal Spread

- OL- 30° x 60°-g (included)
- OL- DF-g polycarbonate film

### FINISHES

Consult with Litelab for other finishes

- P** White
- MB** Black
- CP** Custom Finish

### CORD & PLUG OPTIONS

Consult factory.

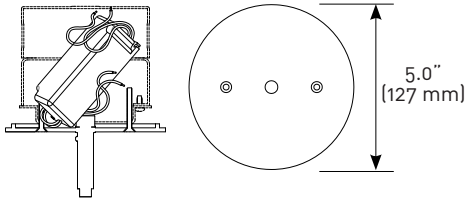


251 Elm Street Buffalo, NY 14203 USA  
800-238-4120 • www.litelab.com © 10/20

**ADAPTERS**

**CANOPY WITH POWER SUPPLY (120V, 277V, 240V)**

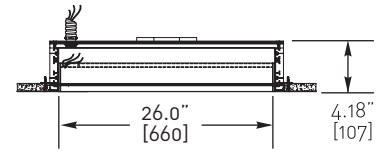
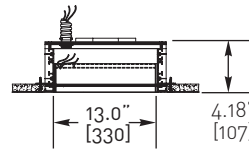
- 3L-A 120V
- 3L-D 240V



5" (127mm) diameter x 1/4" (6mm) height machined canopy with electronic low-voltage power supply. (Junction box by others.)

The number of electrical boxes shown is for reference only, and is the minimum required to fit the power supply indicated. Add extension boxes as necessary to meet the volume requirement based on wire fill as defined by National Electrical Code, Article 314.

**BUSPOINTS**

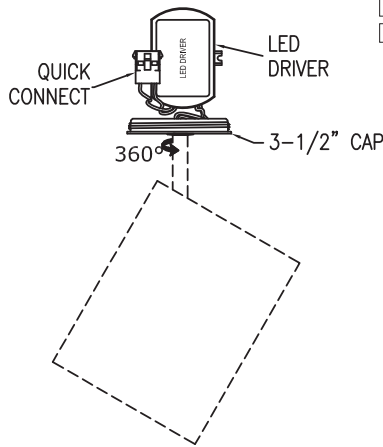


- BP1-08-6A-13** 120V
- BP1-08-3D-13** 240V
- BP1-08-6D-13\*** 240V
- BP1-08-6A-26** 120V
- BP1-08-3D-26** 240V
- BP1-08-6D-26\*** 240V

\* (3-conductor, use "F" voltage code for fixture)

**3-1/2" QUICK CONNECT CANOPY**

3-1/2" canopy voltage



- 5L-A 120V
- 5L-D 240V

**QC-5K** kit is required with -5L fixture.

**3-1/2" QUICK CONNECT FLANGE KIT**

**QC-5K** kit for use with -5L fixture.

