

# Museum Collection Cylinder Series

Job Name:

Fixture Type:

LED

C85



Specify:

C85  -  -  -  -  -  -  -

FIXTURE MODEL

LUMENS

ADAPTER

VOLTAGE

CRI

CCT

FINISH

OPTIC

Example:

C85 L720 - 9TC - A - 90 30 - P - 6

The ultra-high-efficiency LED allows maximum light output from a small fixture with a very narrow 6 degree optic.. The CREE CXB engine is available in an architectural range of color temperatures and produces high CRI and R9 values.

LUMENS-CRI	COLOR TEMPERATURE (CCT) (select one)			INPUT REQUIREMENTS		
		120V	240V	277V		
720-90	27 (2700K)	30 (3000K)	35 (3500K)	0.2A/16W	0.1A/16W	0.1A/16W

## Features & Benefits

### Fixture Description

Single piece die-cast aluminum fixture body allows for high efficiency passive cooling. Deep regressed LED and optic designed for maximum glare control. Very narrow spot, 6 degree optic.

### Flush Fit adapter with Rotation Lock \*

Adapter plugs into Busway with separate electrical and mechanical connections. When used with Deep Busway, Lock and Hide adapters recess entirely inside of Busway. Supplied with standard thumb wheel rotation lock, except on fixtures with optional on-board dimming. Available with on-off switch. Also available with fitters for other standard Litelab track systems.

### Accessory Cartridge

Holds up to two accessories—including a range of lenses, filters and louvers.

### Lenses & Accessories\*\*

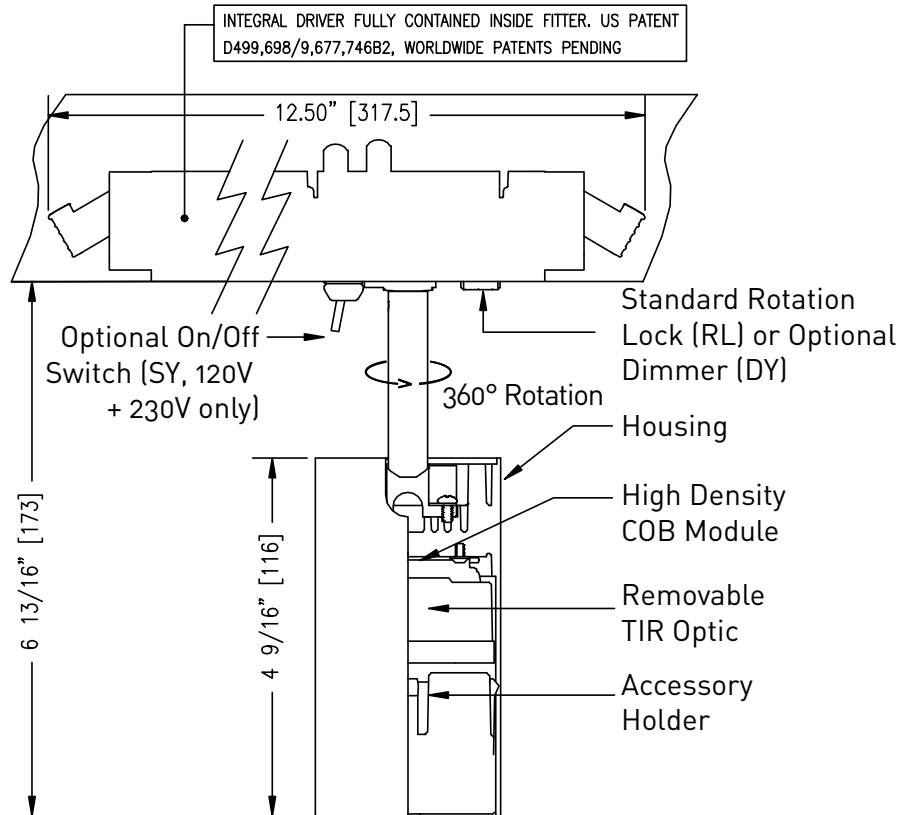
Standard clear lenses in 30° x 60°, 10° x 40° and 10° x 60° optical patterns. Beam softener lenses are also available. Accessory code shall be "a."

### Finishes

Available in white, black and custom finish.

### Dimming

This fixture is provided with an LED Driver suitable for trailing edge dimming. Dimming performance may vary based on dimmer model or system being used. If exact performance is required, Litelab recommends testing the Litelab fixture and specified dimmer.



251 Elm Street Buffalo, NY 14203 USA  
800-238-4120 • www.litelab.com ©09/20

\*Covered under one or more of the following patents: US: 8,740,421 B2, D499, 698, D389,012, Republic of China: D149,379, People's Republic of China: ZL 201130358013.3, European Union: RCD #001920356-0001. Additional patents pending. \*\*See fittings and accessories page for mounting options and accessories.

# Input Fittings & Accessories

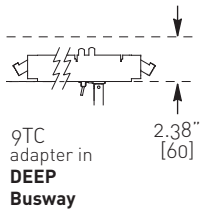
C85

Job Name:

Fixture Type:

## ADAPTERS

### BUSRUN

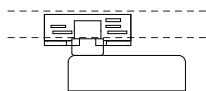


adapter code	on-off switch (no dimmer) optional	on-board dimmer w/ on-off switch optional	rotation lock* standard	voltage
<input type="checkbox"/> 9TC <input type="checkbox"/> -SY <input type="checkbox"/> -DY <input type="checkbox"/> -RL				-A
fused Lock n Hide fitter with integral driver for use with <b>Deep 120V</b> BusRun busway				
<input type="checkbox"/> 9TC <input type="checkbox"/> -SY <input type="checkbox"/> -DY <input type="checkbox"/> -RL				-D
fused Lock n Hide fitter with integral driver for use with <b>Deep 240V</b> "3D" 2-conductor BusRun busway				
<input type="checkbox"/> 9TD <input type="checkbox"/> -SY <input type="checkbox"/> -DY <input type="checkbox"/> -RL				-A
fused plug-in fitter with integral driver for use with <b>Deep 120V</b> BusRun busway				
<input type="checkbox"/> 9TD <input type="checkbox"/> -SY <input type="checkbox"/> -DY <input type="checkbox"/> -RL				-D
fused plug-in fitter with integral driver for use with <b>Deep 240V</b> "3D" 2-conductor BusRun busway				
<input type="checkbox"/> 9TC <input type="checkbox"/> -SY <input type="checkbox"/> -DY <input type="checkbox"/> -RL				-F
fused Lock n Hide fitter with integral driver for use with <b>Deep 240V</b> "2D" or "6D" 3-conductor BusRun busway				
<input type="checkbox"/> 9TD <input type="checkbox"/> -SY <input type="checkbox"/> -DY <input type="checkbox"/> -RL				-F
fused plug-in fitter with integral driver for use with <b>Deep 240V</b> "2D" or "6D" 3-conductor BusRun busway				
<input type="checkbox"/> 9TC <input type="checkbox"/> -SY <input type="checkbox"/> -DY <input type="checkbox"/> -RL				-C
fused Lock n Hide fitter with integral driver for use with <b>Deep 277V</b> BusRun busway				
<input type="checkbox"/> 9TD <input type="checkbox"/> -SY <input type="checkbox"/> -DY <input type="checkbox"/> -RL				-C
fused plug-in fitter with integral driver for use with <b>Deep 277V</b> BusRun busway				

\* When DY option is specified, RL rotation lock feature is not available.  
 \*\* Switch available for 120V and 230V only.

### EUTRAC (120V, 240V)

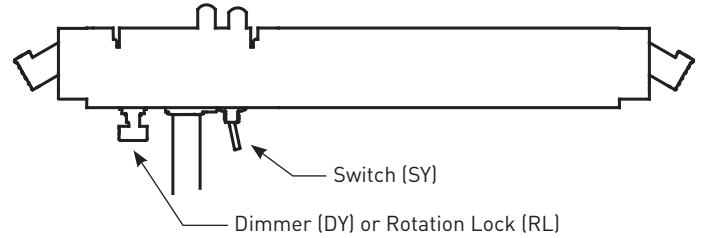
2-3 Circuit



adapter code	data bus contacts optional	on-board dimmer w/ on-off switch optional	voltage
<input type="checkbox"/> E2 <input type="checkbox"/> DB <input type="checkbox"/> -DY-SY			-A
track adapter for use with 2-circuit Eutrac			
<input type="checkbox"/> E3 <input type="checkbox"/> DB <input type="checkbox"/> -DY-SY			-D
track adapter for use with 3-circuit Eutrac			

- When specifying data bus contacts, indicate control protocol.
- Data bus contacts cannot be used on fixture with an on-board dimmer.
- Fixtures with an on-board dimmer are not to be used on dimming circuits.

### 9TC FITTER DETAIL



### ACCESSORIES

#### Spread Lenses

##### Linear Spread

- OL- 10° x 40°-a
- OL- 10° x 60°-a

##### Universal Spread

- OL- 30° x 60°-a

##### Beam Softener

- OL-TD-a Textured Diffusion
- OL-DF-a polycarbonate film

#### Cross Hair Baffle

- 40546-CHB

#### Louvers

- LVH/a

### REFLECTORS

[6] 6° 40547-ASSY

### FINISHES

Consult with Litelab for other finishes

- P** White
- MB** Black
- CP** Custom Finish

### CORD & PLUG OPTIONS

Consult factory.

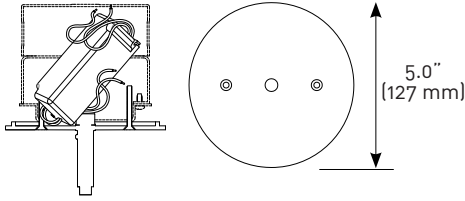


251 Elm Street Buffalo, NY 14203 USA  
 800-238-4120 • www.litelab.com © 09/20

**ADAPTERS**

**CANOPY WITH POWER SUPPLY (120V, 277V, 240V)**

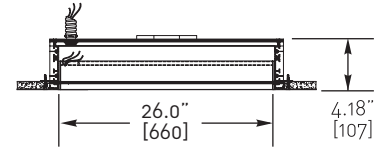
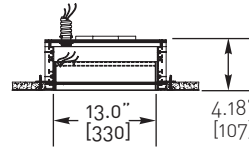
- 3L-A 120V
- 3L-D 240V



5" (127mm) diameter x 1/4" (6mm) height machined canopy with electronic low-voltage power supply. (Junction box by others.)

The number of electrical boxes shown is for reference only, and is the minimum required to fit the power supply indicated. Add extension boxes as necessary to meet the volume requirement based on wire fill as defined by National Electrical Code, Article 314.

**BUSPOINTS**

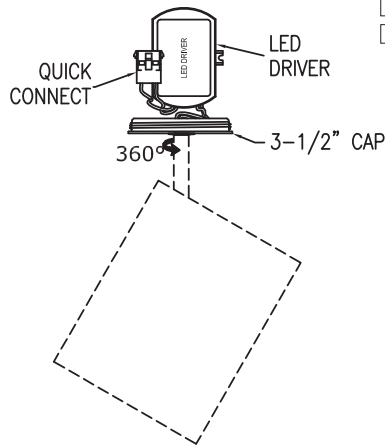


- |  |  |
|--|--|
| <input type="checkbox"/> <b>BP1-08-6A-13</b> 120V  | <input type="checkbox"/> <b>BP1-08-6A-26</b> 120V  |
| <input type="checkbox"/> <b>BP1-08-3D-13</b> 240V  | <input type="checkbox"/> <b>BP1-08-3D-26</b> 240V  |
| <input type="checkbox"/> <b>BP1-08-6D-13*</b> 240V | <input type="checkbox"/> <b>BP1-08-6D-26*</b> 240V |
| <input type="checkbox"/> <b>BP1-08-3C-13</b> 277V  | <input type="checkbox"/> <b>BP1-08-3C-26</b> 277V  |

\* [3-conductor, use "F" voltage code for fixture]

**3-1/2" QUICK CONNECT CANOPY**

3-1/2" canopy voltage



- 5L-A 120V
- 5L-D 240V

**QC-5K** kit is required with -5L fixture.

**3-1/2" QUICK CONNECT FLANGE KIT**

**QC-5K** kit for use with -5L fixture.

