

Museum Collection Cylinder Series

Job Name:

Fixture Type:

LED Narrow Spot

C75



Specify:

C75 - - - - - - -

FIXTURE MODEL LUMENS ADAPTER VOLTAGE CRI CCT FINISH OPTIC

Example:

C75 L835 9TC A 90 30 P 10

This Litelab fixture features a fixed narrow beam at 5 degrees. The ultra-high-efficiency LED allows maximum light output from a small fixture. The CREE XHP-35HI engine is available in an architectural range of color temperatures and produces high CRI and R9 values.

LUMENS-CRI	COLOR TEMPERATURE (CCT) (select one)			INPUT REQUIREMENTS		
	120V	240V	277V	120V	240V	277V
835-90	27 (2700K)	30 (3000K)	35 (3500K)	0.2A/19W	0.1A/19W	0.1A/19W
650-90	27 (2700K)	30 (3000K)	35 (3500K)	0.2A/14W	0.1A/14W	0.1A/14W

Features & Benefits

Fixture Description

Single piece die-cast aluminum fixture body allows for high efficiency passive cooling. Deep regressed LED and optic designed for maximum glare control. Fixed narrow beam 5° optic.

Flush Fit adapter with Rotation Lock *

Adapter plugs into Busway with separate electrical and mechanical connections. When used with Deep Busway, Lock and Hide adapters recess entirely inside of Busway. Supplied with standard thumb wheel rotation lock, except on fixtures with optional on-board dimming. Available with on-off switch. Also available with fitters for other standard Litelab track systems.

Accessory Cartridge

Holds one accessory selected from a range of lenses, filters and louvers.

Lenses & Accessories**

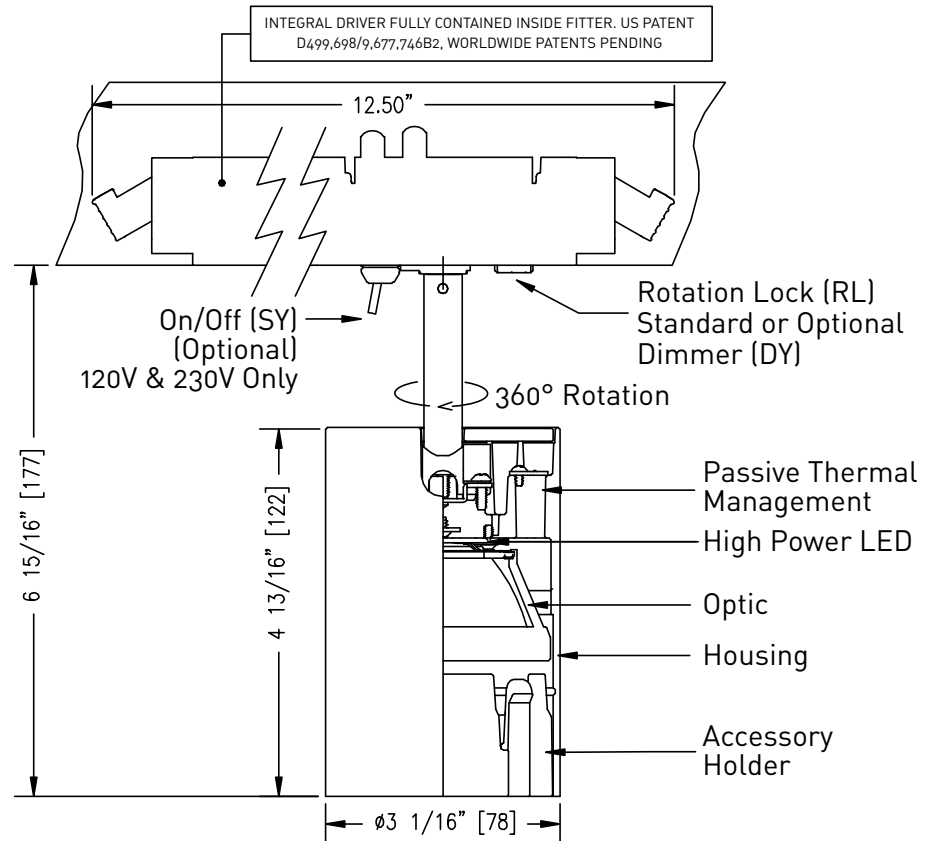
Standard clear lenses are available in 30° x 60°, 10° x 40° and 10° x 60° optical patterns. Beam softener lenses are also available. Accessory code shall be "g."

Finishes

Available in white, black and custom finish.

Dimming

This fixture is provided with an LED Driver suitable for trailing edge dimming. Dimming performance may vary based on dimmer model or system being used. If exact performance is required, Litelab recommends testing the Litelab fixture and specified dimmer.



251 Elm Street Buffalo, NY 14203 USA
800-238-4120 • www.litelab.com © 6/20

*Covered under one or more of the following patents: US: 8,740,421 B2, D499, 698, D389,012, Republic of China: D149,379, People's Republic of China: ZL 201130358013.3, European Union: RCD #001920356-0001. Additional patents pending. **See fittings and accessories page for mounting options and accessories.

Input Fittings & Accessories

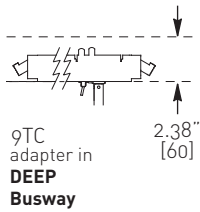
C75

Job Name:

Fixture Type:

ADAPTERS

BUSRUN



adapter code	on-off switch (no dimmer)	on-board dimmer w/ on-off switch	rotation lock*	voltage
	optional	optional		standard

9TC -SY -DY -RL **-A**
fused Lock n Hide fitter with integral driver for use with **Deep 120V** BusRun busway

9TC -SY -DY -RL **-D**
fused Lock n Hide fitter with integral driver for use with **Deep 240V** "3D" 2-conductor BusRun busway

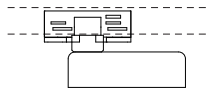
9TC -SY -DY -RL **-F**
fused plug-in fitter with integral driver for use with **Deep 240V** "2D" or "6D" 3-conductor BusRun busway

9TC ****** -DY -RL **-C**
fused plug-in fitter with integral driver for use with **Deep 277V** BusRun busway

- * When DY option is specified, RL rotation lock feature is not available.
- ** Switch available for 120V and 230V only.

EUTRAC (120V, 240V)

2-3 Circuit



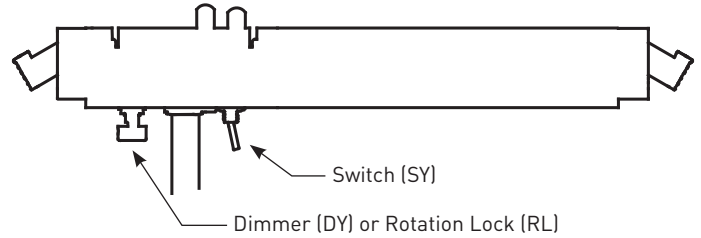
adapter code	data bus contacts	on-board dimmer w/ on-off switch	voltage
	optional	optional	

E2 DB -DY-SY **-A**
track adapter for use with 2-circuit Eutrac

E3 DB -DY-SY **-D**
track adapter for use with 3-circuit Eutrac

- When specifying data bus contacts, indicate control protocol.
- Data bus contacts cannot be used on fixture with an on-board dimmer.
- Fixtures with an on-board dimmer are not to be used on dimming circuits.

FITTER DETAIL



ACCESSORIES

Spread Lenses

- Linear Spread
 - OL- 10° x 40°-g
 - OL- 10° x 60°-g

Universal Spread

- OL- 30° x 60°-g

Beam Softener

- OL-TD-g (Textured Diffusion)
- OL-DF-g polycarbonate film

Cross Hair Baffle

- 64276-01-IM-CHB

Louvers

- LVH/g

REFLECTORS

OL-NB-70MM (included)

FINISHES

Consult with Litelab for other finishes

- P** White
- MB** Black
- CP** Custom Finish

CORD & PLUG OPTIONS

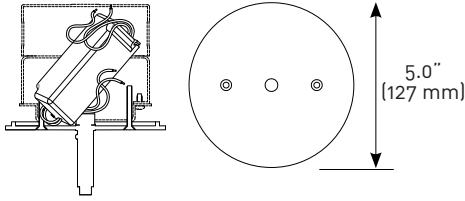
Consult factory.



ADAPTERS

CANOPY WITH POWER SUPPLY (120V, 277V, 240V)

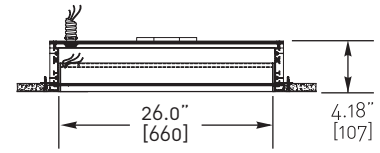
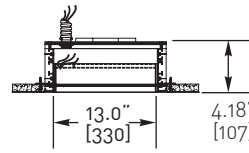
- 3L-A 120V
- 3L-D 240V



5" (127mm) diameter x 1/4" (6mm) height machined canopy with electronic low-voltage power supply. (Junction box by others.)

The number of electrical boxes shown is for reference only, and is the minimum required to fit the power supply indicated. Add extension boxes as necessary to meet the volume requirement based on wire fill as defined by National Electrical Code, Article 314.

BUSPOINTS

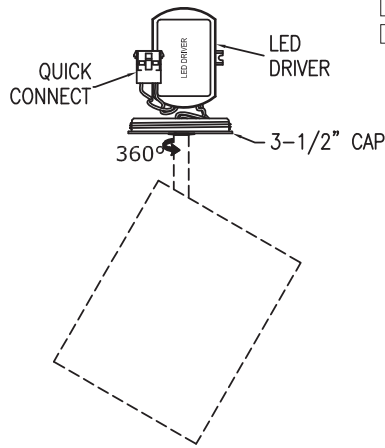


- | | | | |
|--|------|--|------|
| <input type="checkbox"/> BP1-08-6A-13 | 120V | <input type="checkbox"/> BP1-08-6A-26 | 120V |
| <input type="checkbox"/> BP1-08-3D-13 | 240V | <input type="checkbox"/> BP1-08-3D-26 | 240V |
| <input type="checkbox"/> BP1-08-6D-13* | 240V | <input type="checkbox"/> BP1-08-6D-26* | 240V |
| <input type="checkbox"/> BP1-08-3C-13 | 277V | <input type="checkbox"/> BP1-08-3C-26 | 277V |

* [3-conductor, use "F" voltage code for fixture]

3-1/2" QUICK CONNECT CANOPY

3-1/2" canopy voltage



- 5L-D 240V
- 5L-A 120V

QC-5K kit is required with -5L fixture.

3-1/2" QUICK CONNECT FLANGE KIT

QC-5K kit for use with -5L fixture.

