

## LED Wallwash

### A02



**Specify:**

A02  -  -  -  -  -

**FIXTURE MODEL** **LUMENS** - **ADAPTER** - **VOLTAGE** - **CRI** **CCT** - **FINISH**

**Example:**

A02 L1800 - 9TC - A - 92 30 - P

This Litelab fixture features an ultra-high-efficiency LED that allows maximum light output from a small fixture. The CREE CXB engine is available in an architectural range of color temperatures and produces high CRI and R9 values.

LUMENS-CRI	COLOR TEMPERATURE (CCT)			INPUT REQUIREMENTS		
	(select one)			120V	240V	277V
1800-92	27 (2700K)	30 (3000K)	35 (3500K)	0.19A/23W	0.10A/23W	
1300-92	27 (2700K)	30 (3000K)	35 (3500K)	0.12A/15W	0.07A/15W	
1600-98	27 (2700K)	30 (3000K)	35 (3500K)	0.19A/23W	0.10A/23W	
1100-98	27 (2700K)	30 (3000K)	35 (3500K)	0.12A/15W	0.07A/15W	

## Features & Benefits

### Fixture Description

Single piece die-cast aluminum fixture body allows for high efficiency passive cooling. Deep regressed LED and optic designed for maximum glare control. Fixture to be supplied with baffle, accessory holder and OL-30x60 wallwash spread lens.

### Flush Fit adapter with Rotation Lock \*

Adapter plugs into Busway with separate electrical and mechanical connections. When used with Deep Busway, Lock and Hide adapters recess entirely inside of Busway. Supplied with standard thumb wheel rotation lock, except on fixtures with optional on-board dimming. Available with on-off switch. Ask factory about alternative fitters for Litelab fixtures.

### Accessory Cartridge

Holds up to two accessories—including a range of lenses, filters and louvers.

### Lenses & Accessories\*\*

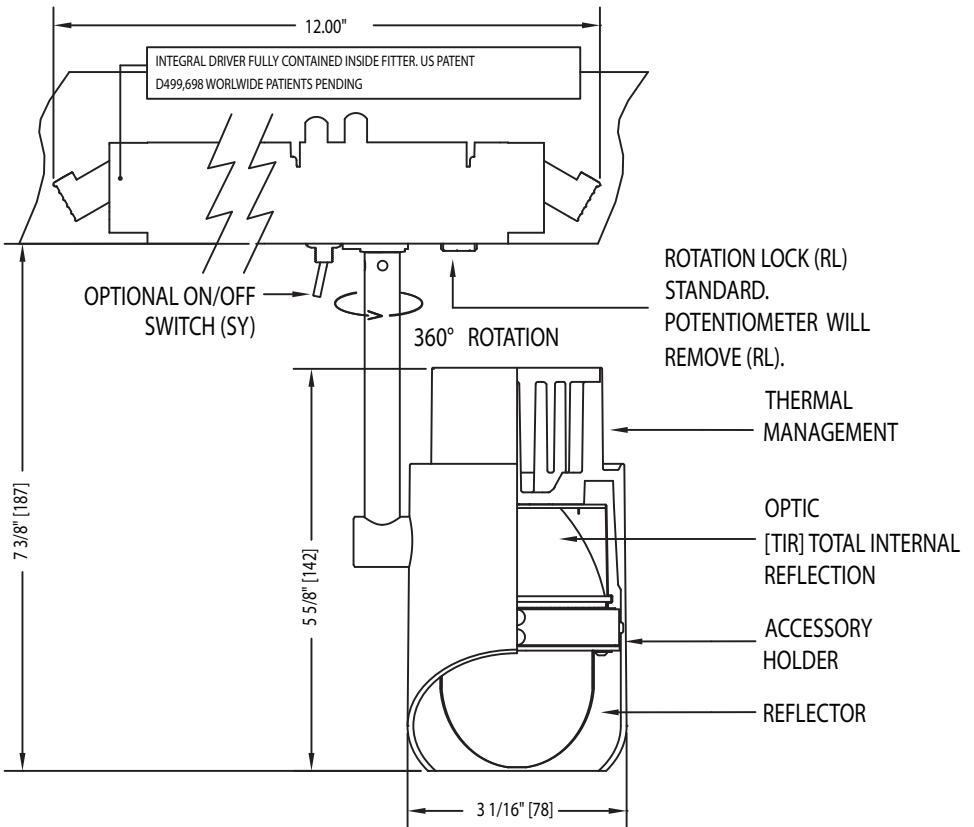
Standard wallwash spread lens included with fixture. Beam softener lenses are also available. Accessory code shall be "g".

### Finishes

Available in white, black and custom finish.

### Dimming

This fixture is provided with an LED Driver suitable for trailing edge dimming. Dimming performance may vary based on dimmer model or system being used. If exact performance is required, Litelab recommends testing the Litelab fixture and specified dimmer.



# Input Fittings & Accessories

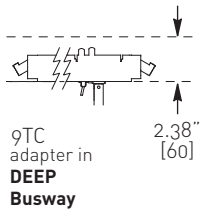
A02

Job Name:

Fixture Type:

## ADAPTERS

### BUSRUN



adapter code	on-off switch (no dimmer) optional	on-board dimmer w/ on-off switch optional	rotation lock* standard	voltage
--------------	------------------------------------	---	-------------------------	---------

9TC  -SY  -DY  -RL **-A**  
fused Lock n Hide fitter with integral driver for use with **Deep 120V** BusRun busway

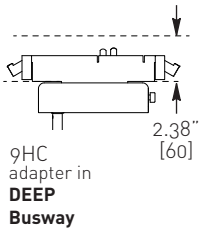
9HC  -SY  -DY **-D**  
fused Lock n Hide fitter with integral driver for use with **Deep 240V** "3D" 2-conductor BusRun busway

9TD  -SY  -DY  -RL **-A**  
fused plug-in fitter with integral driver for use with **Deep 120V** BusRun busway

9HD  -SY  -DY **-D**  
fused plug-in fitter with integral driver for use with **Deep 240V** "3D" 2-conductor BusRun busway

9HC  -SY  -DY **-F**  
fused Lock n Hide fitter with integral driver for use with **Deep 240V** "2D" or "6D" 3-conductor BusRun busway

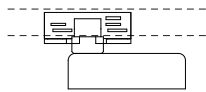
9HD  -SY  -DY **-F**  
fused plug-in fitter with integral driver for use with **Deep 240V** "2D" or "6D" 3-conductor BusRun busway



\* When DY option is specified, RL rotation lock feature is not available.

### EUTRAC (120V, 240V)

2-3 Circuit



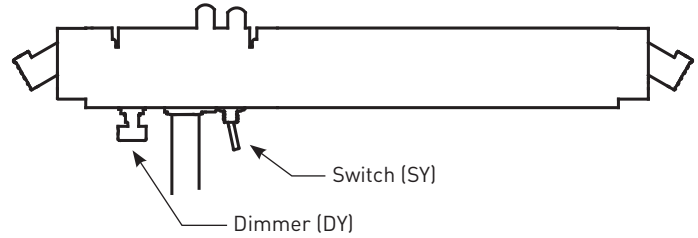
adapter code	data bus contacts optional	on-board dimmer w/ on-off switch optional	voltage
--------------	----------------------------	---	---------

E2  DB  -DY-SY **-A**  
track adapter for use with 2-circuit Eutrac

E3  DB  -DY-SY **-D**  
track adapter for use with 3-circuit Eutrac

- When specifying data bus contacts, indicate control protocol.
- Data bus contacts cannot be used on fixture with an on-board dimmer.
- Fixtures with an on-board dimmer are not to be used on dimming circuits.

### DY-SY FITTER DETAIL (120 VOLT ONLY)



### ACCESSORIES

Spread Lenses

#### Universal Spread

OL- 30° x 60°-g (included)

### FINISHES

Consult with Litelab for other finishes

- P** White
- MB** Black
- CP** Custom Finish

### CORD & PLUG OPTIONS

Consult factory.

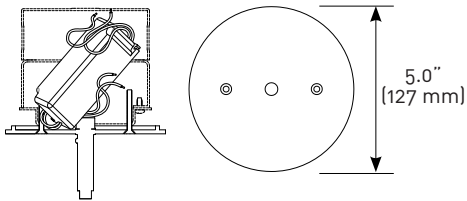


251 Elm Street Buffalo, NY 14203 USA  
800-238-4120 • www.litelab.com © 07/20

ADAPTERS

CANOPY WITH POWER SUPPLY (120V, 277V, 240V)

- 3L-A 120V
- 3L-D 240V



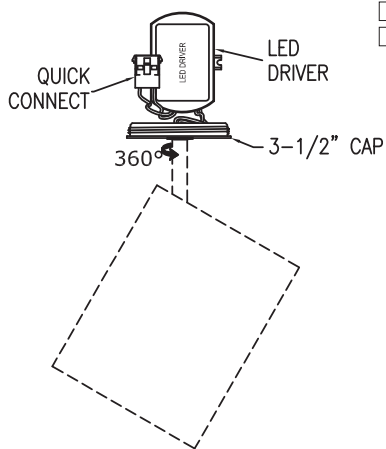
5" (127mm) diameter x 1/4" (6mm) height machined canopy with electronic low-voltage power supply. (Junction box by others.)

The number of electrical boxes shown is for reference only, and is the minimum required to fit the power supply indicated. Add extension boxes as necessary to meet the volume requirement based on wire fill as defined by National Electrical Code, Article 314.

3-1/2" QUICK CONNECT CANOPY

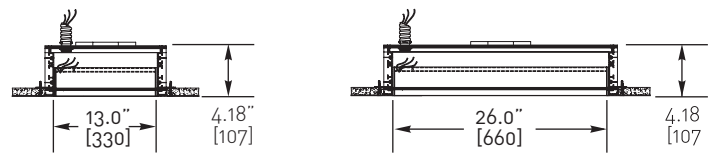
3-1/2" canopy voltage

- 5L-A 120V
- 5L-D 240V



QC-5K kit is required with -5L fixture.

BUSPOINTS



- BP1-08-6A-13 120V
- BP1-08-3D-13 240V
- BP1-08-6D-13\* 240V
- BP1-08-6A-26 120V
- BP1-08-3D-26 240V
- BP1-08-6D-26\* 240V

\* (3-conductor, use "F" voltage code for fixture)

3-1/2" QUICK CONNECT FLANGE KIT

QC-5K kit for use with -5L fixture.

