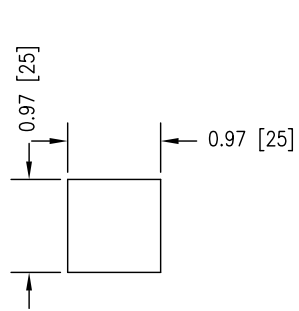
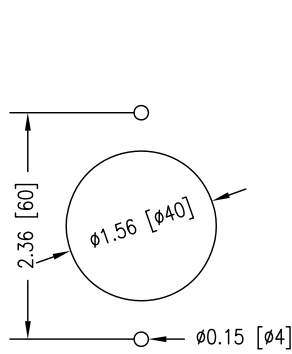
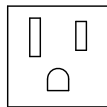


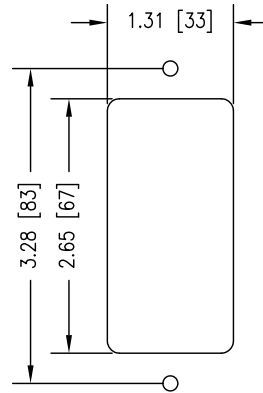
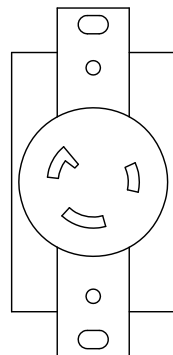
MODEL NUMBER: TR3 BUSPORT	FIXTURE TYPE:	SCALE: 1/2"=1"	FILE NUMBER: BusPort_Panel_Options.dwg	DATE: 02/09/16	NO.	REVISIONS DESCRIPTION	BY	DATE
PROJECT NAME:	APPROX. WEIGHT:	DRAWN BY: CFG	CK'D BY:	FIXTURE DESCRIPTION: BUSPORT 120V PANEL CUTOUTS				



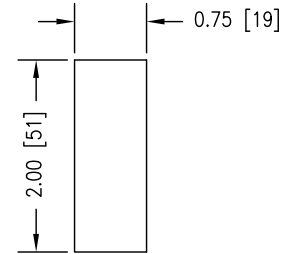
EDISON  
—  
ACCEPTS COOPER  
WIRING DEVICES  
# 49-7 RECEPTACLE  
OR EQUAL



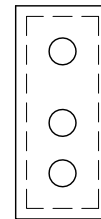
NEMA L5-20R  
—  
TWIST-LOCK  
RECEPTACLE  
20 AMP, 125 VOLTS  
HUBBELL # 2310A  
OR EQUAL, OR  
SIMILAR DEVICES



DECORA

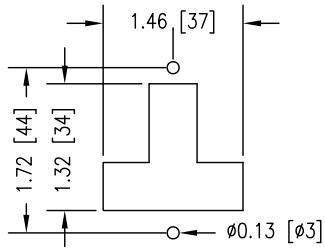


STAGE PIN  
—  
ACCEPTS ROSCO  
LABS #60002 OR  
SIMILAR DEVICES

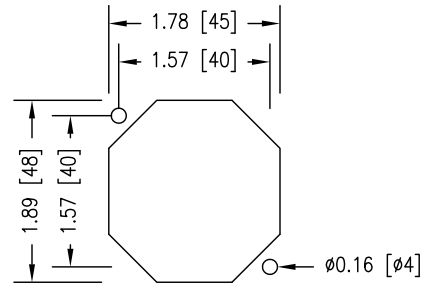


RECEPTACLES NOT INCLUDED

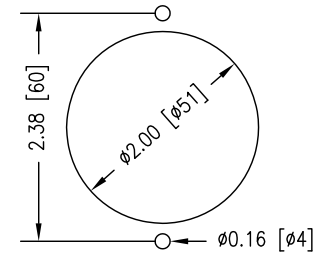
MODEL NUMBER: TR3 BUSPORT	FIXTURE TYPE:	SCALE: 1/2"=1"	FILE NUMBER: BusPort_Panel_Options.dwg	DATE: 02/09/16	NO.	REVISIONS DESCRIPTION	BY	DATE
PROJECT NAME:	APPROX. WEIGHT:	DRAWN BY: CFG	CK'D BY:	FIXTURE DESCRIPTION: BUSPORT 240V PANEL CUTOUTS				



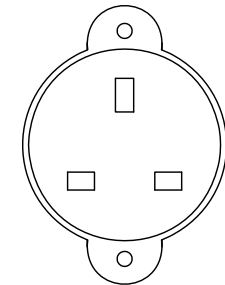
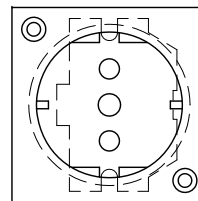
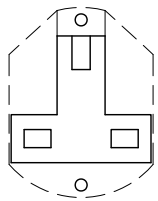
TENBY SOCKETS  
7057 AND 7058



SCHUKO SOCKET  
TYPE CEE 7/4  
—  
INTERPOWER (TM)  
CONTINENTAL EUROPE  
#88010610

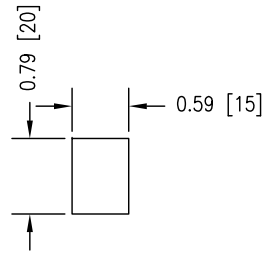
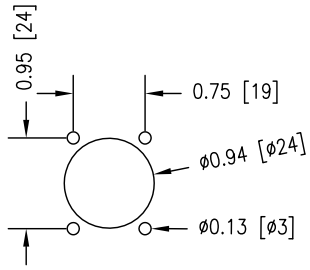


TENBY SOCKETS  
7063/7064 AND 7065  
INTERPOWER 88010621

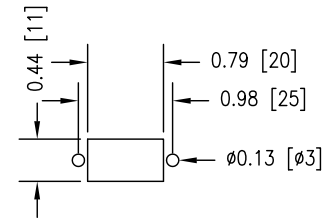


SOCKETS NOT INCLUDED

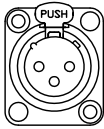
MODEL NUMBER: BUSPORT	FIXTURE TYPE:	SCALE: 1/2"=1"	FILE NUMBER: BusPort_Panel_Options.dwg	DATE: 04/13/10	NO.	REVISIONS DESCRIPTION	BY	DATE
PROJECT NAME:	APPROX. WEIGHT:	DRAWN BY: CFG	CK'D BY:	FIXTURE DESCRIPTION: BUSPORT DATA PANEL CUTOUTS				



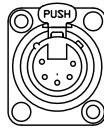
KEYSTONE



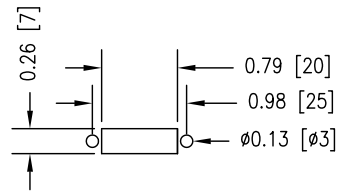
VGA - DH15F



XLR



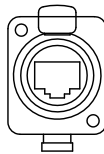
DMX



HDMI



SPEAKON  
NL4MP-M3



RJ45

JACKS NOT INCLUDED