

To be successful in this  
industry it helps to work  
with the best...

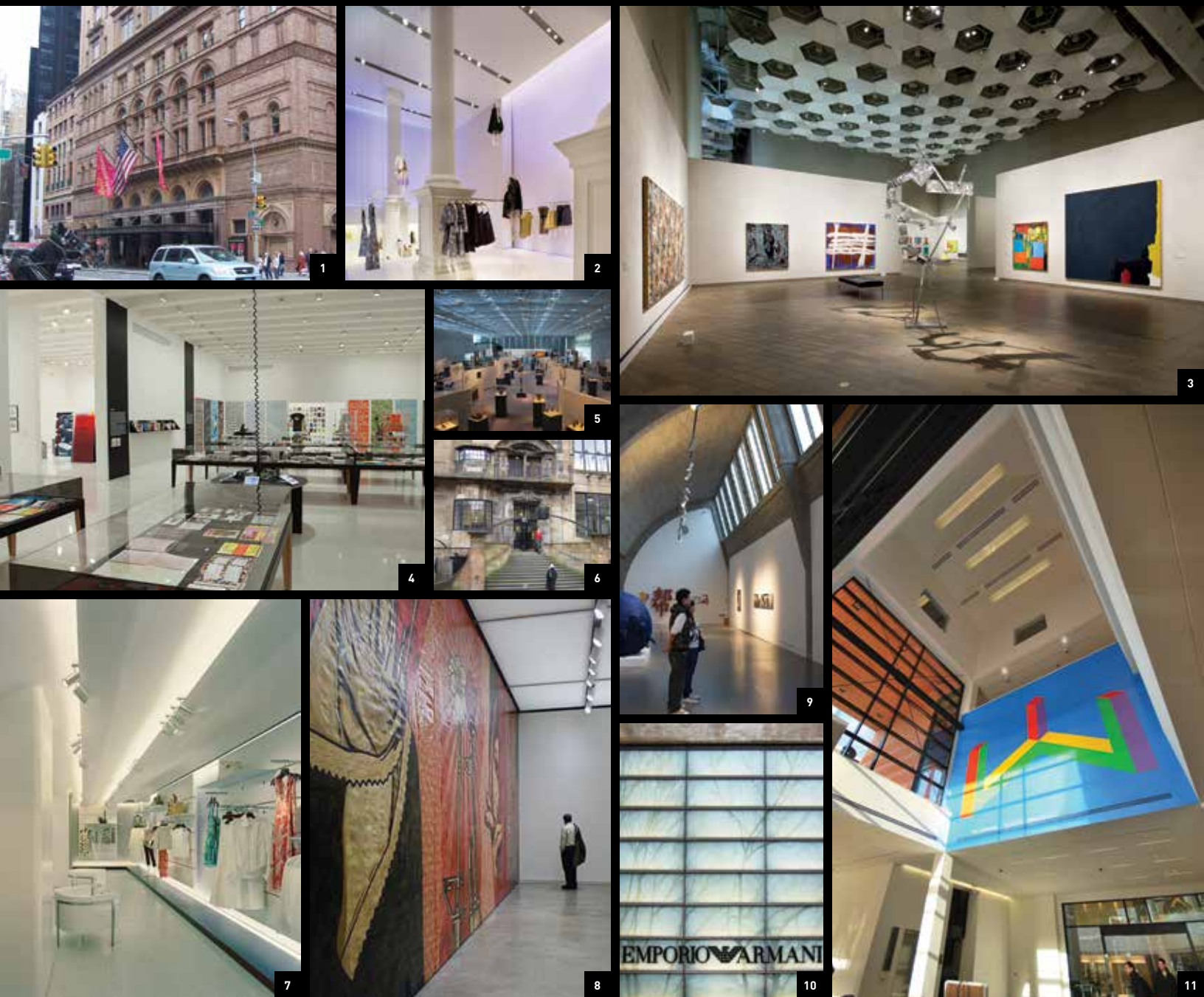


...the best architects and designers..

1220 Exhibits Inc ▪ Abernathy Lighting Design ▪ Act Espace ▪ Allied Works Architecture ▪ Altieri Sebor Wieber LLC ▪ Anne Kale Associates ▪ Antonio Citterio and Partners S.r.l. ▪ Antonio Virga Architect ▪ AP3C ▪ Arc Light Design ▪ Archiluce International LD ▪ Architecture & Light ▪ ARUP ▪ Atmosphere Design Group LLC ▪ Auerbach Glasow French ▪ Available Light Inc ▪ Barteluce Architects & Associates ▪ Benya Lighting Design ▪ Beretta Associates ▪ Bergmeyer Associates Inc ▪ Beyer Blinder Belle ▪ Bliss Fasman Inc ▪ Blue Bottle ▪ Bohlin, Cywinski, Jackson ▪ Bonnetti Kozerski Studio LLC ▪ Brand Allen Architects ▪ Brennan Beer Gorman Architects ▪ Callison Architecture ▪ Calvert Wright Architects ▪ Cambridge Seven Associates ▪ Studio Daniel Libeskind ▪ David Anthony Easton ▪ David Chipperfield Architects ▪ Davis Mackiernan Architectural Lighting ▪ Davis Partnership ▪ DCM Studios ▪ De Ponte & Gaeta Architects ▪ Deborah Berke & Partners Architect ▪ Denton Corker Marshall ▪ Diller Scofidio + Renfro ▪ Domingo Gonzalez Associates ▪ Edoardo Guazzoni Architetto ▪ Electro Media Design Ltd ▪ Electrolight LTD ▪ Ellerbe Becket ▪ Enzo Riva Architetto ▪ Fisher Marantz Stone ▪ Flack & Kurtz Lighting Group ▪ Flaming Beacon Pty Ltd ▪ Focus Lighting ▪ Form Architecture & Interiors ▪ Foster and Partners ▪ Fox & Fox Design ▪ Frances Krahe Associates ▪ Gehry Partners ▪ FRCH Design Worldwide ▪ Gabellini Sheppard Associates ▪ Gabriel MacKinnon Design ▪ Gary Steffy Lighting Design Inc ▪ Gensler Associates ▪ George Sexton Associates ▪ Gerard Hilferty & Associates ▪ Gertler & Went Architects LLP ▪ Gluckman Mayner Architects ▪ Graham Gund Architects ▪ Grenald Waldron Associates ▪ H.E. Banks and Associates ▪ Hammel Green & Abrahamson ▪ Happold Ingenieurburo Gmbh ▪ Hardy Holtzman Pfeiffer Associates ▪ Hartman-Cox Architects ▪ HDLC Lighting ▪ Heatherwick Studio ▪ Hefferan Partnership ▪ Hellmuth, Obata & Kaddabaum, Inc ▪ Herzog & de Meuron ▪ High Tech s.r.l. ▪ Higo Design Associates ▪ Hillier Group ▪ Hirsch-Bedner Associates ▪ Horton Lees Lighting Design ▪ Illuminating Concepts ▪ Illumination Works ▪ Innovative Design Group ▪ Intension Lighting ▪ Isometrix Lighting + Design ▪ Jaklitsch/Gardner Architects ▪ Janson Goldstein LLP ▪ Jonathan Speirs & Associates ▪ JS Nolan & Associates Lighting Design ▪ Keio Engineering Co ▪ Kohn Pederson Fox ▪ Kugler Ning Lighting Design ▪ Lam Partners Inc ▪ Lang Lighting Design ▪ Lee H Skolnick ▪ Leo A Daly Architects ▪ Levy Lighting ▪ Lighting Design Studio ▪ Lord Aeck & Sargent Architects ▪ Luminae Souter Associates ▪ Mancini Duffy ▪ Mario Botta Architetto ▪ Mario Ciuffarin Architect ▪ Mark Jacksen Illumination ▪ McKay Architecture & Design ▪ McDonald Architects ▪ Modern Development & Associates ▪ Metis Lighting srl ▪ Michael Wilson Kelly Architect ▪ Modus Architectural Lighting ▪ Moshe Safdie & Associates ▪ NBBJ ▪ Newcomb & Boyd ▪ Patrick Quigley & Associates ▪ Paul Bennett Architect ▪ Paul KY Chen Architect ▪ Paul Morgan Lighting Design ▪ Pavlik Design Team ▪ PEI Cobb Freed & Partners ▪ Perkins & Will ▪ Perry Dean Rogers Architects ▪ Peter L. Glick & Partners ▪ Peter Marino Architects ▪ Pfeiffer Associates ▪ Phillips Group ▪ Polshek & Partners Architects ▪ PTW Architects ▪ Rafael Vinoly Architects ▪ Ralph Appelbaum Associates ▪ Renzo Piano Building Workshop ▪ Renzo Zecchetto Architects ▪ Revolver Design ▪ Ripman Lighting Consultants ▪ Robert Newell Lighting Design ▪ Rockwell Architecture Group ▪ RTKL Associates ▪ Schuler & Shook Lighting Designers ▪ Schwartz & Silver Architects ▪ Schweppe Lighting Design ▪ Schwinghammer Lighting, LLC ▪ Selldorf Architects ▪ Skidmore Owings & Merrill ▪ Smith Group ▪ Swankee Hayden Connell ▪ Syska & Hennessy Group Inc ▪ Ted Moudis Associates Inc ▪ Thierry W. Despont Ltd ▪ Thomas Phifer & Partners ▪ Tillett Lighting Design Inc ▪ Tillotson Design Associates ▪ Walt Disney Imagineering ▪ Weddle & Gilmore Architects ▪ Westlake Reed Leskosky ▪ William Armstrong Lighting Design ▪ William Riegel Lighting Design ▪ Yoshio Taniguchi\*

*\* and this is just a short list of the many talented architects and designers we work with...*

...and, of course, the best clients in the world.



[1] Carnegie Hall, New York • Auerbach Glasow French Architectural Lighting Design [2] Vera Wang, New York • Gabbani Scotland • Charles Rennie Mackintosh [7] Bergdorf-Goodman, New York • Gabbani Sheppard Associates [8] ICA, Boston • Studio [13] Louis Vuitton Marina Bay Sands, Singapore • Peter Marino [14] MFA, Boston • Foster and Partners [15] The Carolina Museum of Art, Raleigh • Thomas Phifer and Partners [20] Senator John Heinz History Center, Pittsburgh • Dali Museum, St. Petersburg • HOK [25] Louisiana Museum, Copenhagen • Poul Hasbeck [26] Fendi, New York • Peter Gabbani Sheppard Associates [31] Ralph Lauren, Paris • Schwinghammer Lighting, LLC [32] National Museum of Art



12



13



14



15



16



17



18



19



20

bellini Sheppard Associates [3] National Gallery of Australia, Canberra • PTW Architects [4] Walker Art Center, Minneapolis • Her  
oston • Diller Scofidio and Renfro [9] Pace Gallery, Beijing • Gluckman Mayner Architects [10] Emporio Armani • Cooley Monato Stud  
Tiffany's, New York • Ted Moudis Associates [16] LACMA, Los Angeles • Renzo Piano Building Workshop [17] Alice Tully Hall, Lincoln  
• Bohlin, Cywinski, Jackson [21] Richard B. Fisher Center for the Performing Arts at Bard College, New York • Gehry Partners [22] F  
ster Marino [27] Akron Art Museum, Akron • Coop Himmelb(l)au [28] Cleveland Museum of Art, Cleveland • Rafael Viñoly Architects  
American History, Washington, DC • Skidmore, Owings & Merrill



21



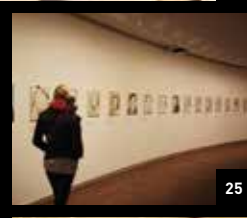
22



23



24



25



26



27



28



29



30



31



32

[5] Sainsbury Centre for Visual Arts, Norwich • Foster and Partners [6] Glasgow School of Art, Glasgow • Norman Foster [7] Bechtler Museum of Modern Art, Charlotte • Mario Botta Architetto [8] Longchamp, New York • Heatherwick Studio [9] American Museum of Natural History, New York • Diller Scofidio and Renfro [10] Museum of Modern Art, New York • Yoshio Taniguchi [11] North Park Mall, New York • Foster and Partners [12] North Park Mall, New York • Foster and Partners [13] North Park Mall, New York • Foster and Partners [14] North Park Mall, New York • Foster and Partners [15] North Park Mall, New York • Foster and Partners [16] North Park Mall, New York • Foster and Partners [17] North Park Mall, New York • Foster and Partners [18] Museum of Modern Art, New York • Yoshio Taniguchi [19] North Park Mall, New York • Foster and Partners [20] North Park Mall, New York • Foster and Partners [21] North Park Mall, New York • Foster and Partners [22] North Park Mall, New York • Foster and Partners [23] Denver Art Museum • Studio Daniel Libeskind [24] Salvador Dalí Museum, New York • Studio Daniel Libeskind [25] Museum of Arts and Design, New York • Brad Cloepfil/Allied Works Architecture [26] Museum of Arts and Design, New York • Brad Cloepfil/Allied Works Architecture [27] Museum of Arts and Design, New York • Brad Cloepfil/Allied Works Architecture [28] Museum of Arts and Design, New York • Brad Cloepfil/Allied Works Architecture [29] Museum of Arts and Design, New York • Brad Cloepfil/Allied Works Architecture [30] Museum of Arts and Design, New York • Brad Cloepfil/Allied Works Architecture [31] Museum of Arts and Design, New York • Brad Cloepfil/Allied Works Architecture [32] Museum of Arts and Design, New York • Brad Cloepfil/Allied Works Architecture



## About Litelab

Litelab began as a theatrical and entertainment supply company in 1975 with the objective of providing products and services that were cutting edge of the rapidly growing disco lighting industry. Our technological innovations led to us become a leading manufacturer of lighting fixtures, controls, and special effects for most of the world's major clubs as well as the movie "Saturday Night Fever." In the mid-eighties however, the disco market began to stagnate and Litelab turned its innovation to the high end retail, museum, and hospitality markets. Our commitment is to design and build very functional products in a simple, yet elegant fashion, suitable for any marketplace in the world. Our production is based on three continents and our products have been installed on six of the seven continents. Today, with brand identification, durability, and energy efficiency being the highest priorities for our clients, Litelab remains an innovator, actively pursuing the most current technology and making its best features available to our clients.

## Contacts

Litelab Corporation  
 251 Elm Street  
 Buffalo, NY 14203  
 United States

716.856.4300 Telephone  
 716.856.0156 Fax

Litelab has representatives throughout the world. To locate the one closest to you, please visit our website.

**[www.litelab.com](http://www.litelab.com)**



FACTORIES IN UNITED STATES | CHINA | FRANCE | BRAZIL