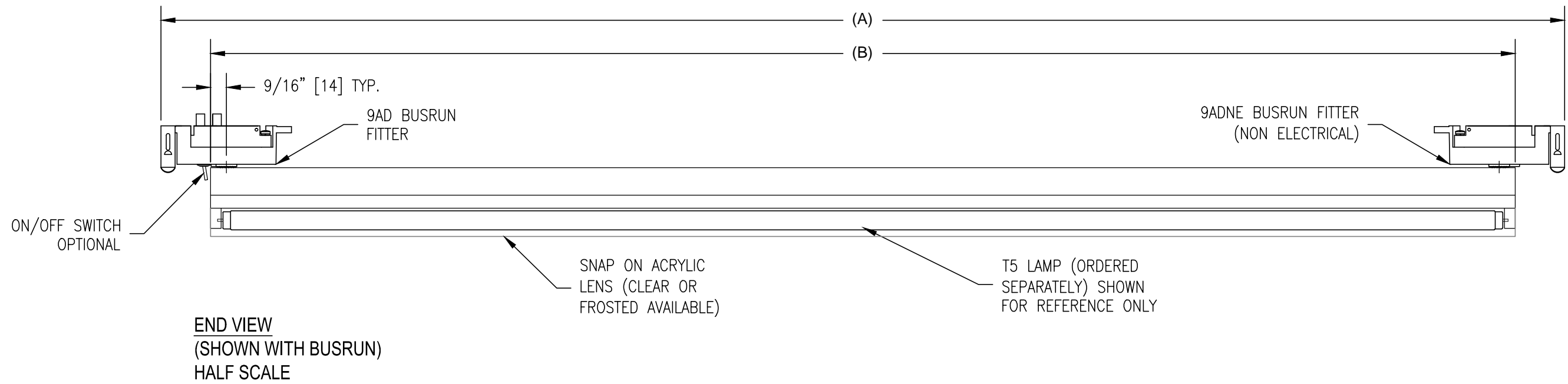


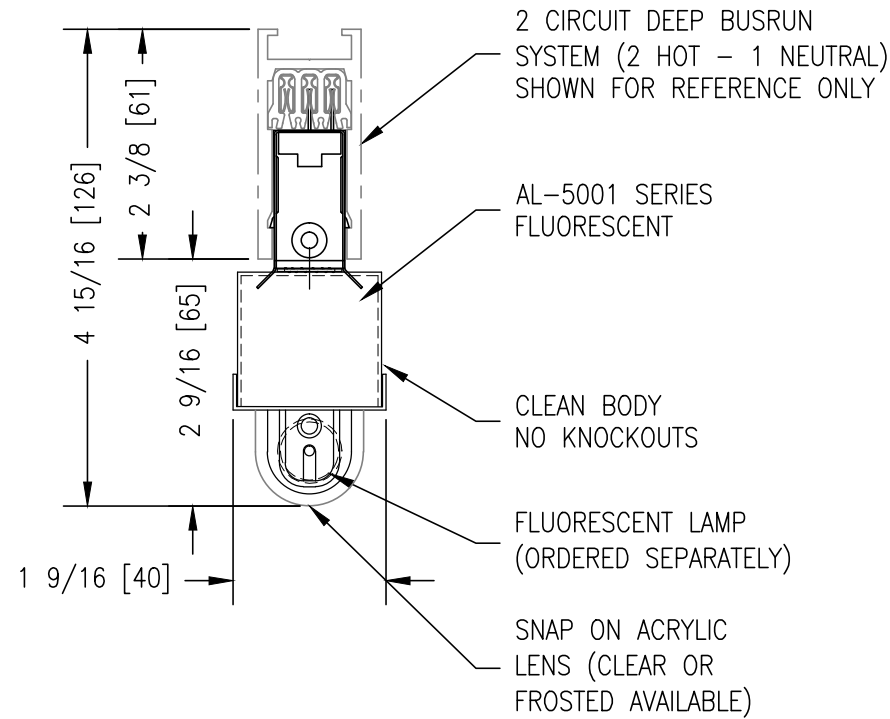
MODEL NUMBER: FL-5001-<LAMP>-9AD-<VOLTAGE>-P-M2	FIXTURE TYPE: FL-5001	DATE: 8/5/13	SCALE: 1/4=1	FILE NUMBER: Product\Fundamentals\Fluorescents\FL-series	DRAWN BY: SDP	CHECKED BY: S.D.P	NO.	REVISIONS DESCRIPTION	BY	DATE
PROJECT NAME:	WEIGHT: n/a	FIXTURE DESCRIPTION: LINEAR T5 FLUORESCENT 5001 ON 9AD FITTER				1	UPDATED MODEL NUMBERS	M.A.S	8/27/13	

FINISH:
MATTE WHITE (P)

SIDE VIEW



**END VIEW
(SHOWN WITH BUSRUN)
HALF SCALE**



**FIXTURE SPECIFICATION & INPUT REQUIREMENTS:
(LAMPS ORDERED SEPARATELY)**

STANDARD OUTPUT

		FLOURESCENT MOL (B)	OVERALL LENGTH (A)
F14T5	T5 14W (120V/60Hz/.16 AMPS), (277V/60Hz/.07 AMPS)	22 1/2" [572]	26" [660]
F21T5	T5 21W (120V/60Hz/.22 AMPS), (277V/60Hz/.10 AMPS)	34 1/4" [870]	37 3/4" [959]
F28T5	T5 28W (120V/60Hz/.28 AMPS), (277V/60Hz/.12 AMPS)	46 1/8" [1172]	49 5/8" [1260]
F35T5	T5 35W (120V/60Hz/.34 AMPS), (277V/60Hz/.15 AMPS)	58" [1473]	61 1/2" [1562]

DIMMING NOT AVAILABLE FOR STANDARD T5

EXAMPLE: FL-5001-F28T5-9AD-A-P-M2

HIGH OUTPUT

		FLOURESCENT MOL (B)	OVERALL LENGTH (A)
F24T5	T5 24W (120V/60Hz/.25 AMPS), (277V/60Hz/.10 AMPS)	22 1/2" [572]	26" [660]
F39T5	T5 39W (120V/60Hz/.37 AMPS), (277V/60Hz/.17 AMPS)	34 1/4" [870]	37 3/4" [959]
F54T5	T5 54W (120V/60Hz/.54 AMPS), (277V/60Hz/.23 AMPS)	46 1/8" [1172]	49 5/8" [1260]
F80T5	T5 80W (120V/60Hz/.76 AMPS), (277V/60Hz/.33 AMPS)	58" [1473]	61 1/2" [1562]

**EXAMPLE: FL-5001-F54T5-9AD-A-P-M2 (NON DIMMING)
FL-5001-F39T5-9AD-A-P-DM2 (DIMMING)**

**NOTE: DESIGNED FOR 2 WIRE DIMMING ONLY.
FOR DIMMING OPTIONS CONSULT FACTORY.**

