

Halogen

Par30



LED Compatible Fixture

F21PAR30-9AD shown in Deep BusRun

job name:

fixture type:

Specify: **F21PAR30** - - - -

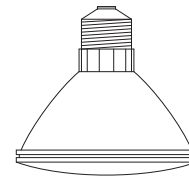
| FIXTURE MODEL     | ADAPTER | VOLTAGE | FINISH | ACCESSORIES (optional) |
|-------------------|---------|---------|--------|------------------------|
| example: F21PAR30 | -9AD-RL | -A      | -NT    | -OL5x55-p              |

**Fundamentals Collection Fixtures**

- Fits standard 1.81" (46mm) and deep 2.38" (60mm) BusRun.
- Fixture rotates up to 360° and may be ordered with optional on/off switch and rotation lock.
- Accessory Cartridge is designed to be remounted in the same position after relamping, maintaining proper orientation of all accessories.

**Lamp**

PAR30 Halogen (Short Neck Only)



**Ratings**

75 watts maximum



**Features & Benefits**

**F21PAR30-9AD** shown

**Fixture Description**

.050" spun aluminum housing with .125" aluminum bar stock yoke.

**Flush Fit adapter with Rotation Lock \*\***

Adapter plugs into Busway with separate electrical and mechanical connections. Optional thumb wheel horizontal rotation lock and switch available.

**Lenses & Accessories\*\***

Standard clear lenses are available in 55° x 75°, 5° x 55° or 5° x 30° optical patterns. Photo etched light blocking screens and barndoors also available.

**Accessory Size Code: p**

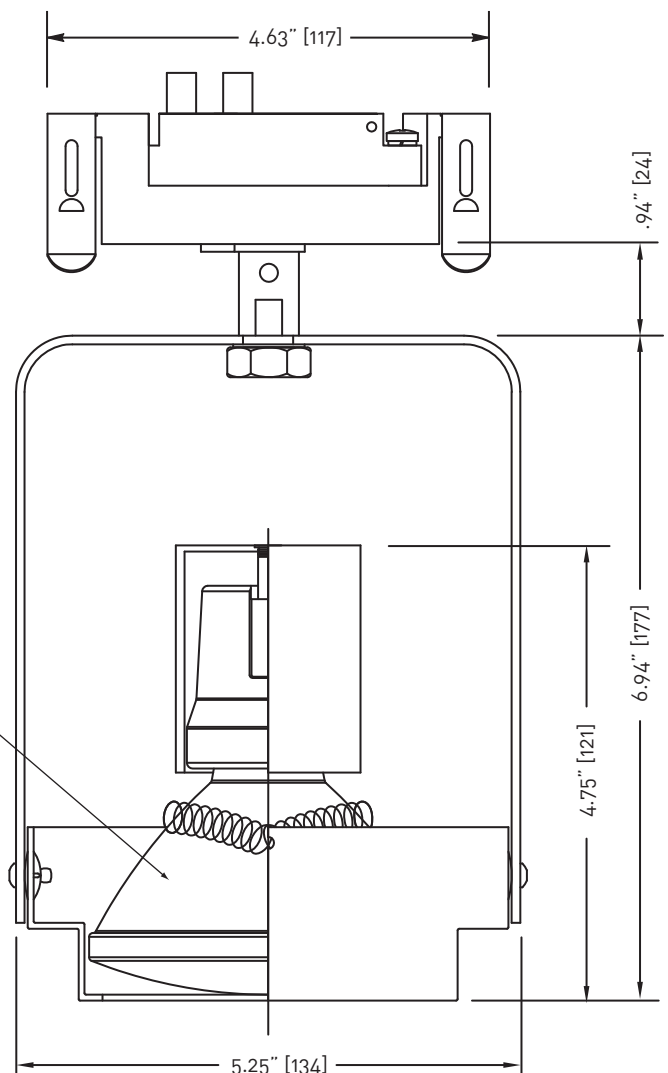
**Accessories**

Holds up to three accessories - including a range of lenses, filters and louvers.

**Finishes**

Available in black, white, brushed aluminum or custom finish.

Lamp (ordered separately)

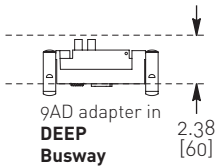


\*\*See fittings and accessories page for mounting options and accessories.



**Adapters**

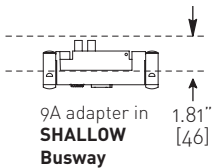
**BusRun**



| adapter code | on-off switch | rotation lock | voltage |
|--------------|---------------|---------------|---------|
|              | optional      | optional      |         |

**9AD -SY -RL -A**  
fused plug-in fitter for use with **Deep 120V BusRun** busway

**9AD -SY -RL -D**  
fused plug-in fitter for use with **Deep 240V BusRun** busway

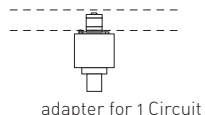


**9AS -SY -RL -A**  
fused plug-in fitter for use with **Shallow 120V BusRun** busway

**9AS -SY -RL -D**  
fused plug-in fitter for use with **Shallow 240V BusRun** busway

**Track (120V,240V)**

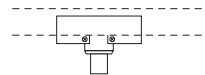
**1-3 Circuit**



adapter for 1 Circuit

Basic track adapter - 1.5" [38] x 1.5" [38] x 1.18" [30] Ht. for use in single circuit track.

**BT**

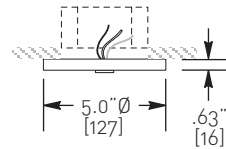


adapter for 2 Circuit  
adapter for 3 Circuit

Spec Track adapter - 3.8" [97] L x 1.25" [32] W x .75" [19] Ht for use in two or three circuit track.

**EUT-2**  
**EUT-3**

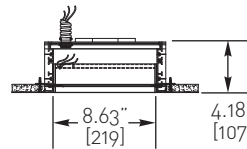
**Canopy (120V, 240V, 277V)**



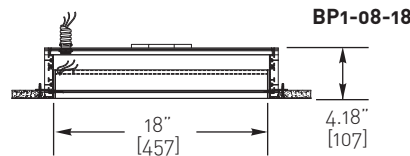
**-2**

painted spun steel canopy, 5.0" diameter x .63" height

**BusPoints**

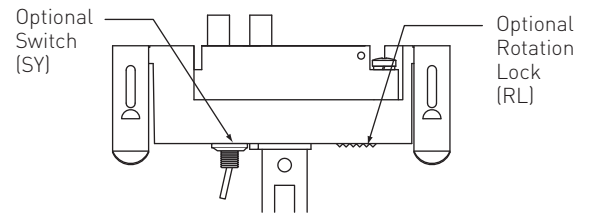


**BP1-08-09**



**BP1-08-18**

**Fitter Detail**



**Accessories**

**Spread Lenses**

**Linear Spread\***  
OL- 5° x 30°-p  
OL- 5° x 55°-p

**Universal Spread**  
OL- 55° x 75°-p

**Beam Softener**  
OL-SF-p

**Clear Pyrex**  
OL-Flat-p

**UV Filter**  
OL-Flat-p-UV

\* available with UV coating (add -UV to part number when specifying.)

**Louvers & Screens**

**Hexcell Louver**  
LVH/p

**Cube Cell Louver**  
LVR/p

**Cross Hair Baffle**  
CHB/p

**Snoots**

**Straight**  
SNOOT-S-p-15

**Wallwash**  
SNOOT-SW-p-15

**Clamps & Cords**

**Light-Duty C-Clamp**

**6LL** with straight cord  
**6LC** with coil cord  
for 1.0 to 1.63" o.d. pipe [25-41mm]

**Heavy-Duty C-Clamp**

**6HL** with straight cord  
**6HC** with coil cord  
for .75 to 2.0" o.d. pipe [19-51mm]

**Finishes**

Consult with Litelab for custom finishes.

- NT** Brushed Aluminum
- MB** Black
- P** White
- CP** Custom Paint

