

Halogen

MR-16/Side Car



F10MR16-9AD shown in Deep BusRun

job name:

fixture type:

Specify: **F10MR16** - - - -

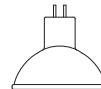
FIXTURE MODEL	ADAPTER	VOLTAGE	FINISH	ACCESSORIES (optional)
example: F10MR16	-9AD-RL	-A	-NT	-OL5x55-a

Fundamentals Collection Fixtures

- Fits standard 1.81" (46mm) and deep 2.38" (60mm) BusRun.
- Fixture rotates up to 360° and may be ordered with optional on/off switch and rotation lock.
- Accessory Cartridge is designed to be remounted in the same position after relamping, maintaining proper orientation of all accessories.

Lamp

12-volt, Halogen MR-16 (by others)



Ratings

75 watts maximum



Features & Benefits

F10MR16-9AD shown

Fixture Description

.050" spun aluminum housing with .125" aluminum bar stock yoke.

Flush Fit adapter with Rotation Lock **

Adapter plugs into Busway with separate electrical and mechanical connections. Optional thumb wheel horizontal rotation lock and switch available.

Lenses & Accessories**

Standard clear lenses are available in 55° x 75°, 5° x 55° or 5° x 30° optical patterns. Photo etched light blocking screens and barndoors also available.

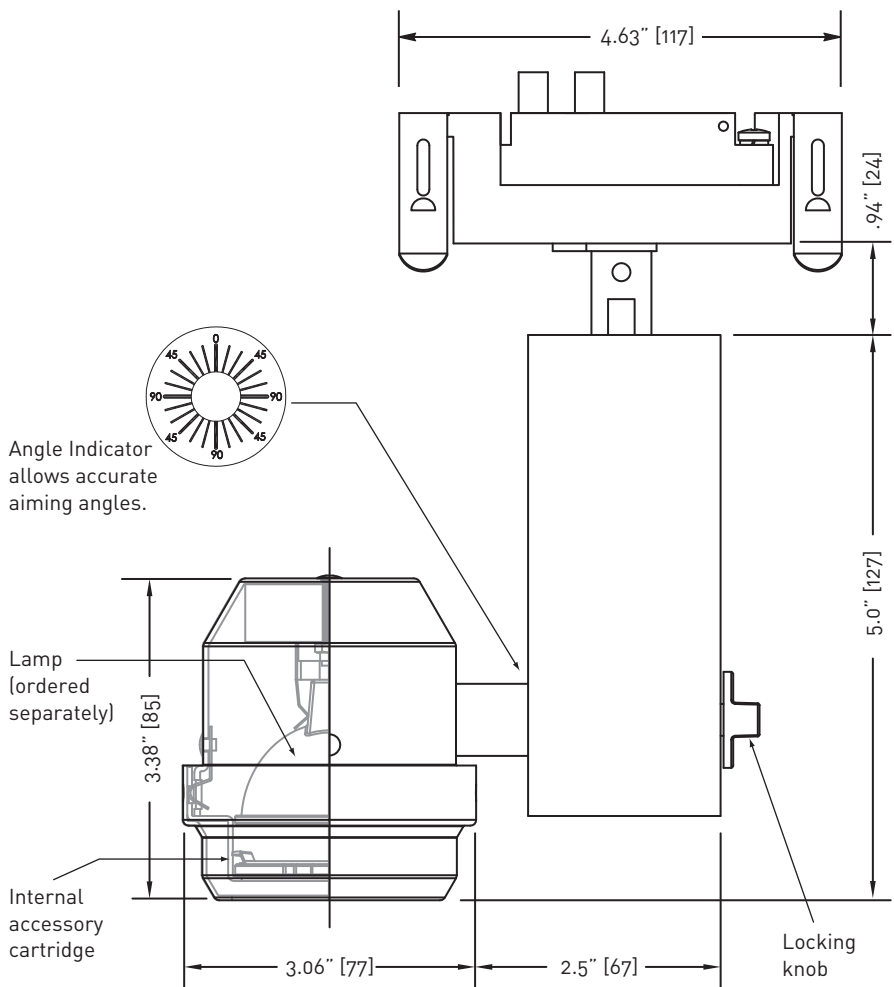
Accessory Size Code: a

Accessory Cartridge

Front installation permits separate lens rotation adjustment for proper lens orientation. This optical matte black cartridge allows for straight or wall-wash snoots, and holds up to three accessories - including a range of lenses, filters and louvers.

Finishes

Available in black, white, brushed aluminum or custom finish.

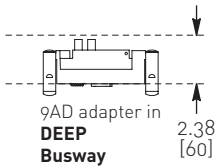


**See fittings and accessories page for mounting options and accessories.



Adapters

BusRun

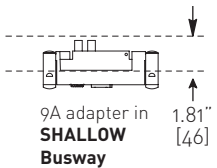


adapter code	on-off switch	rotation lock	voltage
	optional	optional	

9AD -SY -RL -A
fused plug-in fitter for use with **Deep 120V BusRun** busway

9AD -SY -RL -D
fused plug-in fitter for use with **Deep 240V BusRun** busway

9AD -SY -RL -C
fused plug-in fitter for use with **Deep 277V BusRun** busway



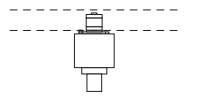
9AS -SY -RL -A
fused plug-in fitter for use with **Shallow 120V BusRun** busway

9AS -SY -RL -D
fused plug-in fitter for use with **Shallow 240V BusRun** busway

9AS -SY -RL -C
fused plug-in fitter for use with **Shallow 277V BusRun** busway

Track (120V,240V)

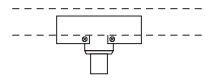
1-3 Circuit



adapter for 1 Circuit

Basic track adapter - 1.5" [38] x 1.5" [38] x 1.18" [30] Ht. for use in single circuit track.

BT

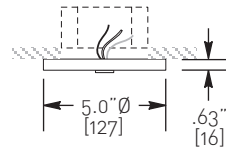


adapter for 2 Circuit
adapter for 3 Circuit

Spec Track adapter - 3.8" [97] L x 1.25" [32] W x .75" [19] Ht for use in two or three circuit track.

EUT-2
EUT-3

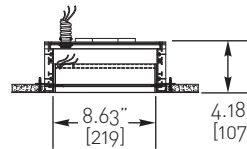
Canopy (120V, 240V, 277V)



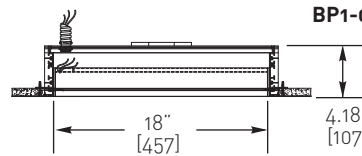
-2

painted spun steel canopy, 5.0" diameter x .63" height

BusPoints

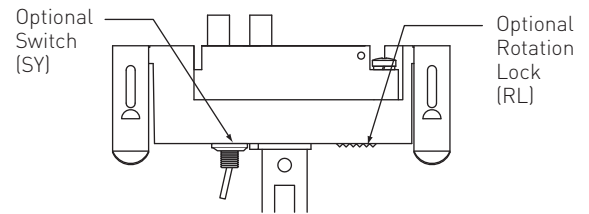


BP1-08-09



BP1-08-18

Fitter Detail



Accessories

Spread Lenses

Linear Spread*

OL- 5° x 30°-a
OL- 5° x 55°-a

Universal Spread

OL- 55° x 75°-a

Beam Softener

OL-SF-a

Clear Pyrex

OL-Flat-a (included)

UV Filter

OL-Flat-a-UV

* available with UV coating (add -UV to part number when specifying.)

Louvers & Screens

Hexcell Louver

LVH/a

Cube Cell Louver

LVR/a

Cross Hair Baffle

CHB/a

Light Block Screen

B-15/a

Photo-etched, 15% light-blocking screen. Accepts up to 5 for 30%, 45%, 60% or 75% (maximum)

Snoots

Straight

SNOOT-S-a-13

Wallwash

SNOOT-SW-a-13

Barndoors

Barndoor

BDL/a

Clamps & Cords

Light-Duty C-Clamp

6LL with straight cord
6LC with coil cord for 1.0 to 1.63" o.d. pipe [25-41mm]

Heavy-Duty C-Clamp

6HL with straight cord
6HC with coil cord for .75 to 2.0" o.d. pipe [19-51mm]

Finishes

Consult with Litelab for custom finishes.

NT	Brushed Aluminum
MB	Black
P	White
CP	Custom Paint

