

Halogen

Par30



F08PAR30-9AD shown in Deep BusRun

job name:

fixture type:

Specify: **F08PAR30** - - - -

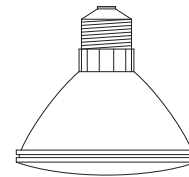
FIXTUREMODEL	ADAPTER	VOLTAGE	FINISH	ACCESSORIES (optional)
example: F08PAR30	-9AD-RL	-A	-NT	-OL5x55-p

**Fundamentals Collection Fixtures**

- Fits standard 1.81" (46mm) and deep 2.38" (60mm) BusRun.
- Fixture rotates up to 360° and may be ordered with optional on/off switch and rotation lock.
- Accessory Cartridge is designed to be remounted in the same position after relamping, maintaining proper orientation of all accessories.

**Lamp**

PAR30 Halogen  
(Short Neck Only)



**Ratings**

75 watts maximum



**Features & Benefits**

**F08PAR30-9AD** shown

**Fixture Description**

.050" spun aluminum housing with .125" aluminum bar stock yoke.

**Flush Fit adapter with Rotation Lock \*\***

Adapter plugs into Busway with separate electrical and mechanical connections. Optional thumb wheel horizontal rotation lock and switch available.

**Lenses & Accessories\*\***

Standard clear lenses are available in 55° x 75°, 5° x 55° or 5° x 30° optical patterns. Photo etched light blocking screens and barndoors also available.

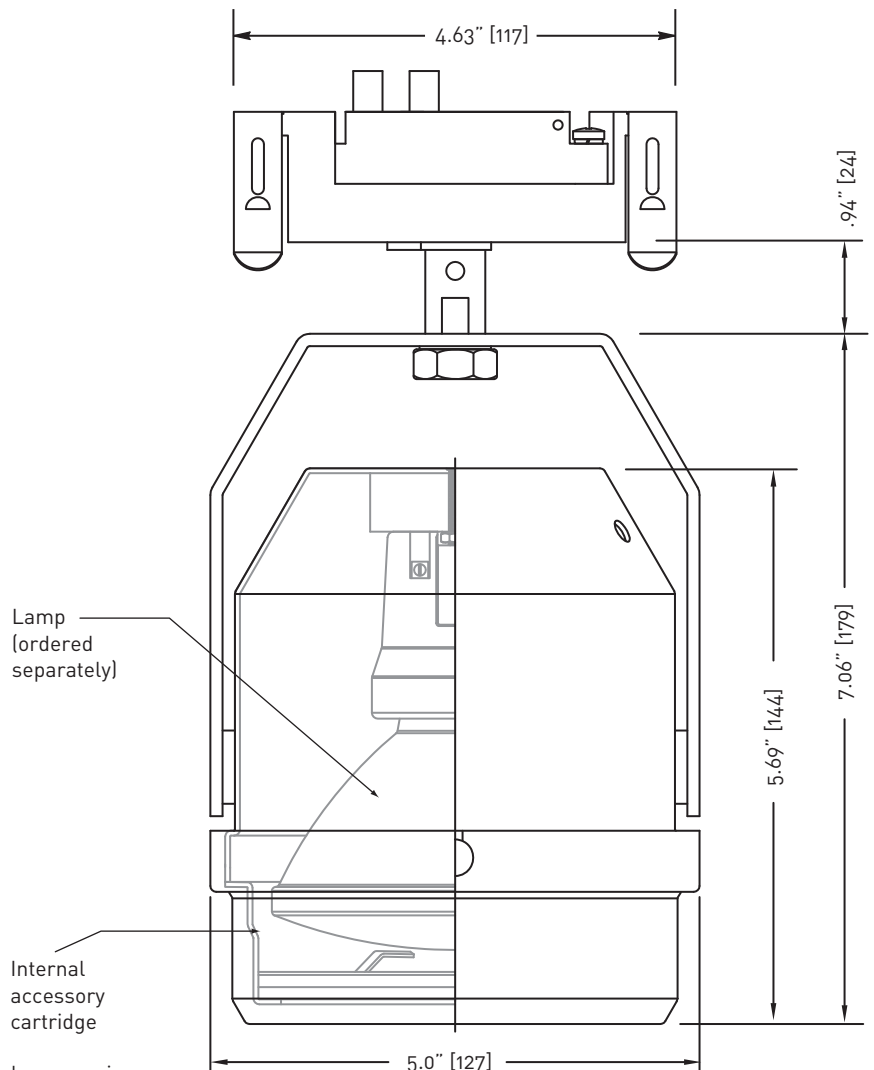
**Accessory Size Code: p**

**Accessory Cartridge**

Front installation permits separate lens rotation adjustment for proper lens orientation. This optical matte black cartridge allows for straight or wall-wash snoots, and holds up to three accessories - including a range of lenses, filters and louvers.

**Finishes**

Available in black, white, brushed aluminum or custom finish.

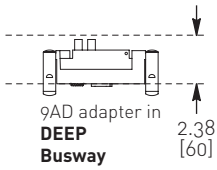


\*\*See fittings and accessories page for mounting options and accessories.



**Adapters**

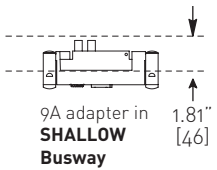
**BusRun**



adapter code	on-off switch	rotation lock	voltage
	optional	optional	

**9AD -SY -RL -A**  
fused plug-in fitter for use with **Deep 120V BusRun** busway

**9AD -SY -RL -D**  
fused plug-in fitter for use with **Deep 240V BusRun** busway

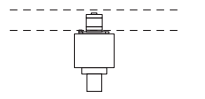


**9AS -SY -RL -A**  
fused plug-in fitter for use with **Shallow 120V BusRun** busway

**9AS -SY -RL -D**  
fused plug-in fitter for use with **Shallow 240V BusRun** busway

**Track (120V,240V)**

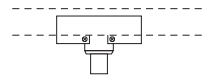
**1-3 Circuit**



adapter for 1 Circuit

Basic track adapter - 1.5" [38] x 1.5" [38] x 1.18" [30] Ht. for use in single circuit track.

**BT**

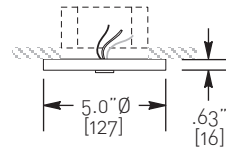


adapter for 2 Circuit  
adapter for 3 Circuit

Spec Track adapter - 3.8" [97] L x 1.25" [32] W x .75" [19] Ht for use in two or three circuit track.

**EUT-2**  
**EUT-3**

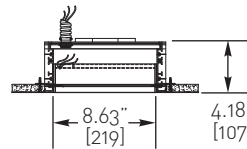
**Canopy (120V, 240V, 277V)**



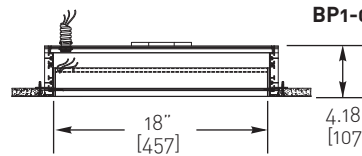
**-2**

painted spun steel canopy, 5.0" diameter x .63" height

**BusPoints**

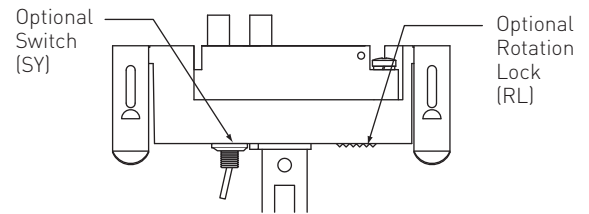


**BP1-08-09**



**BP1-08-18**

**Fitter Detail**



**Accessories**

**Spread Lenses**

**Linear Spread\***

OL- 5° x 30°-p  
OL- 5° x 55°-p

**Universal Spread**

OL- 55° x 75°-p

**Beam Softener**

OL-SF-p

**Clear Pyrex**

OL-Flat-p

**UV Filter**

OL-Flat-p-UV

\* available with UV coating (add -UV to part number when specifying.)

**Louvers & Screens**

**Hexcell Louver**

LVH/p

**Cube Cell Louver**

LVR/p

**Cross Hair Baffle**

CHB/p

**Light Block Screen**

B-15/p

Photo-etched, 15% light-blocking screen. Accepts up to 5 for 30%, 45%, 60% or 75% (maximum)

**Snoots**

**Straight**

SNOOT-S-p-15

**Wallwash**

SNOOT-SW-p-15

**Barndoors**

**Barndoor**

BDL/p

**Clamps & Cords**

**Light-Duty C-Clamp**

**6LL** with straight cord  
**6LC** with coil cord for 1.0 to 1.63" o.d. pipe [25-41mm]

**Heavy-Duty C-Clamp**

**6HL** with straight cord  
**6HC** with coil cord for .75 to 2.0" o.d. pipe [19-51mm]

**Finishes**

Consult with Litelab for custom finishes.

<b>NT</b>	Brushed Aluminum
<b>MB</b>	Black
<b>P</b>	White
<b>CP</b>	Custom Paint

