

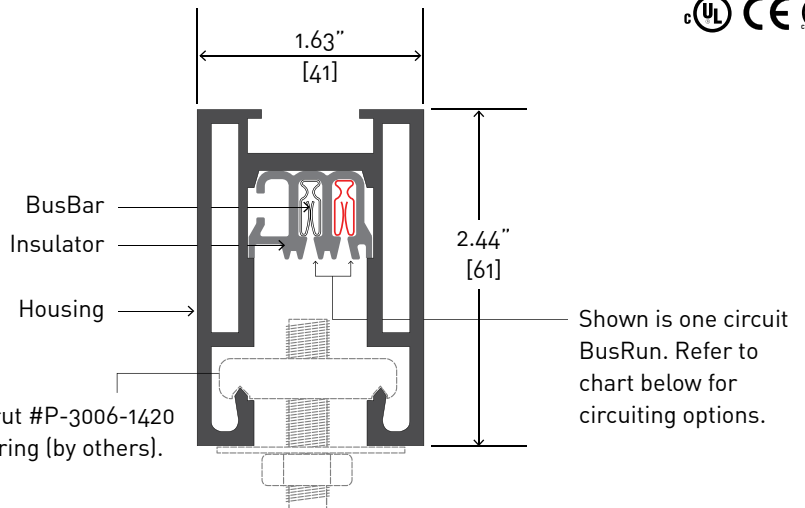
Extrusion Profile:

**BUS-20**

Mounting Condition:

**Surface (S)**

CEILING MOUNTED



## Specifications

### Materials:

Extruded aluminum housing of 0.148" (3.7mm) wall thickness, with thermoplastic busbar insulator containing #6 AWG equivalent, roll-formed copper busbars.

### Ratings:

Conforms to the definition of continuous plug-in busway system according to N.E.C. Article 368. UL listed for dry location, with maximum ambient temperature of 40°C (104°F.) #8 AWG leads, 60 amp maximum rated load per circuit, up to 300 volts, 5,000 AIA.

### Mounting:

Mounting hardware included. 100lb (45.4kg) maximum static load between Support points. Mounting hardware must be attached to the structure to sufficiently support load.

## Vinyl/Voltage Options

 1A

**BUS-20S1A**

1 circ. (120V)  
1-hot, 1-neutral


 2A

**BUS-20S2A**

2 circ. (120V)  
2-hot, 1-neutral


 3D

**BUS-20S3D**

1 circ. (240V)  
1-hot, 1-neutral


 2D

**BUS-20S2D**

2 circ. (240V)  
2-hot, 1-neutral


 3C

**BUS-20S3C**

1 circ. (277V)  
1-hot, 1-neutral


 4B

**BUS-20S4B**

1 circ. (12V)  
1-hot, 1-neutral


 4K

**BUS-20S4K**

1 circ. (12V INT'L)  
1-hot, 1-neutral



## Amperage Options

 1

**16 AMP**

(240V)

 2

**20 AMP**

 3

**30 AMP**

 6

**60 AMP**

## Color Options

 MB

Black

 P

White

 NT

Brushed Aluminum

 UF

Unfinished Mill

 CP

Custom Finish

## Model Number Guide

To build a BusRun model number - fill in the boxes below based on your selections from above.

Example: **B U S - 2 0 S 1 A X X 6 - . M B -**

*This model number represents extrusion Bus 20, a surface mounting condition, 1-circuit-120V, 60 amps and color black.*

Specify: **B U S - 2 0 S [ ] [ ] X X [ ] - . [ ] [ ] [ ] [ ] [ ] [ ] - [ ] [ ]**

VINYL/VOLTAGE

AMPS

LENGTH IN INCHES IF KNOWN

COLOR



### Mounting Rules

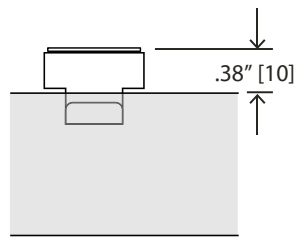
**12" [300]** A support point must be provided within 12" of every end or corner of the BusRun layout.

**5'-0" [1524]** Maximum distance between support points cannot exceed 5'-0" linear feet of 'surface' BusRun Busway.

**3"** Support points cannot be within 3" from the centerline on both sides of BusRun joints.

**100lb [45kg]** BusRun Busway and mounting hardware are rated for a total supported weight up to 100lbs [45kg] between Support points.

### Mounting Options

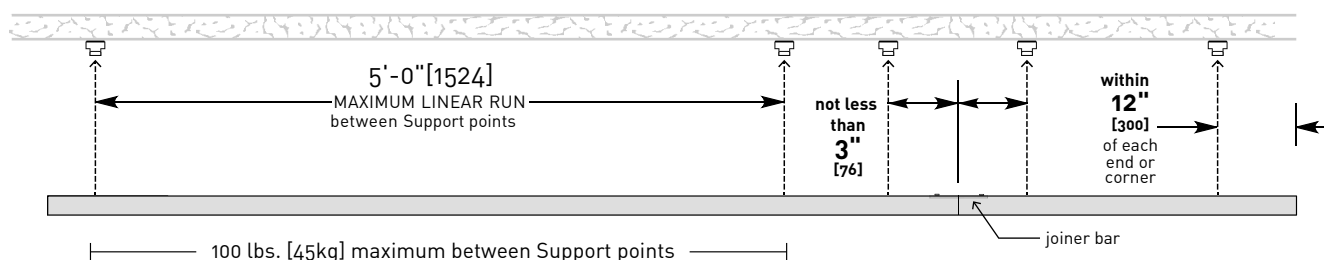


#### Surface Clip

Stainless steel spring clip with mounting hole and washer to protect finished ceiling as clip is rotated into BusRun mounting channel. (Included)

B-HS3 (dozen)

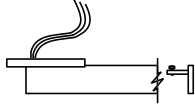
### Mounting Diagram





### Feed Options

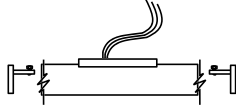
- CEF-20S  
 CEC-20S (CL)



Canopy End Feed:  
6.75" dia canopy

**Max Load**  
60 amp at 12v, 120v,  
240v, 277v

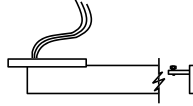
- CCF-20S



Canopy Center Feed:  
6.75" dia canopy

**Max Load**  
60 amp at 12v, 120v,  
240v, 277v

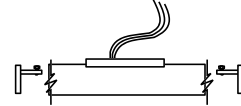
- CEF-20S-SQ  
 CEC-20S-SQ (CL)



Canopy End Feed:  
5" square canopy

**Max Load**  
60 amp at 12v, 120v,  
240v, 277v  
(Add "SQ" to end of  
model number)

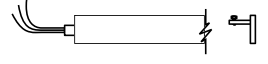
- CCF-20S-SQ



Canopy Center Feed:  
5" square canopy

**Max Load**  
60 amp at 12v, 120v,  
240v, 277v  
(Add "SQ" to end of  
model number)

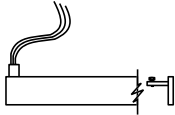
- EEF-20S  
 EEC-20S (CL)



End End Feed:  
Whip Style  
1/2" NPSM or 20mm  
end conduit

**Max Load**  
60 amp at 12v, 120v,  
240v, 277v

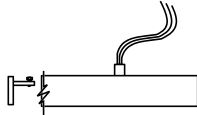
- TEF-20S  
 TEC-20S (CL)



Top End Feed:  
Whip Style  
1/2" NPSM or 20mm  
top conduit

**Max Load**  
60 amp at 12v, 120v,  
240v, 277v

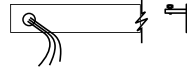
- TCF-20S



Top Center Feed:  
Whip Style  
1/2" NPSM or 20mm  
top conduit

**Max Load**  
60 amp at 12v, 120v,  
240v, 277v

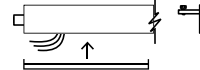
- SEF-20S  
 SEC-20S (CL)



Side End Feed:  
1/2" NPSM or 20mm  
side conduit

**Max Load**  
60 amp at 12v, 120v,  
240v, 277v  
\*CL

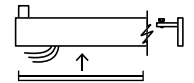
- EEB-20S



End End Feed:  
Splice Box Style  
1/2" NPSM or 20mm  
end conduit

**Max Load**  
30 amp at 120v, or  
16 amp at 240v

- TEB-20S



Top End Feed:  
Splice Box Style  
1/2" NPSM or 20mm  
top conduit

**Max Load**  
30 amp at 120v, or  
16 amp at 240v

### Notes:

1. All Splice Box feeds are 30 amp max load.
2. All feeds are supplied with two end caps.
3. Feeds cannot be modified.
4. Feeds can be made 10" to 120" long.

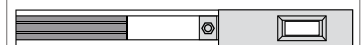
### Current Limiter (CL)

(120v only)

#### Available Amperages

1.0A	120VA
1.5A	180VA
2.0A	240VA
3.0A	360VA
4.0A	480VA
5.0A	600VA
6.0A	720VA
8.0A	960VA
12.0A	1440VA

Side View



Reflected Plan View