



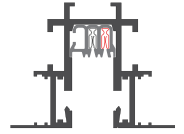
Extrusion Profile:

**BUS-11**

Mounting Condition:

**Recessed (R)**

T-BAR, TRIMMED



**Mounting Rules**

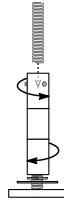
**12"** [300] A support point must be provided within 12" of every end or corner of the BusRun layout.

**4'-0"** [1220] Maximum distance between support points cannot exceed 4'-0" linear feet of 'surface' BusRun Busway.

**3"** [76] Support points cannot be within 3" from the centerline on both sides of BusRun joints.

**100lb** [45kg] BusRun Busway and mounting hardware are rated for a total supported weight up to 100lbs [45kg] between Support points.

**Mounting Options**

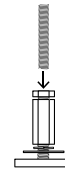


**Threaded Rod Hanger**

Nickel-plated counter-rotating threaded rod hanger and mounting bar enable attachment and leveling of BusRun to fixed threaded rod.

B-HH0-TR250 for 1/4-20 rod

B-HH0-TR375 for 3/8-16 rod



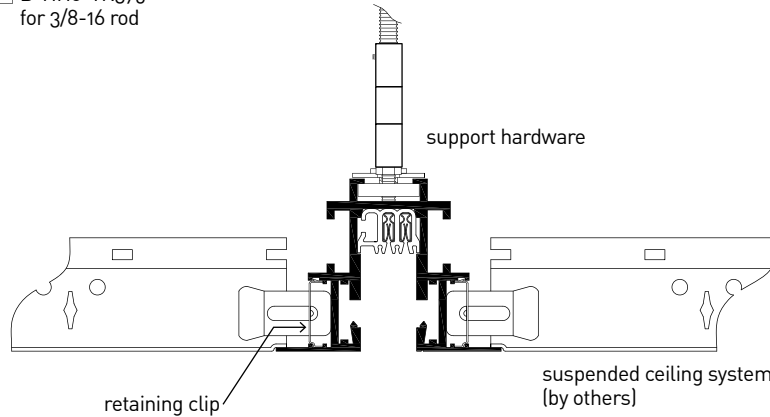
**Coupling Nut** for threaded rod

B-HH0-CK-M6-01 for M6 rod

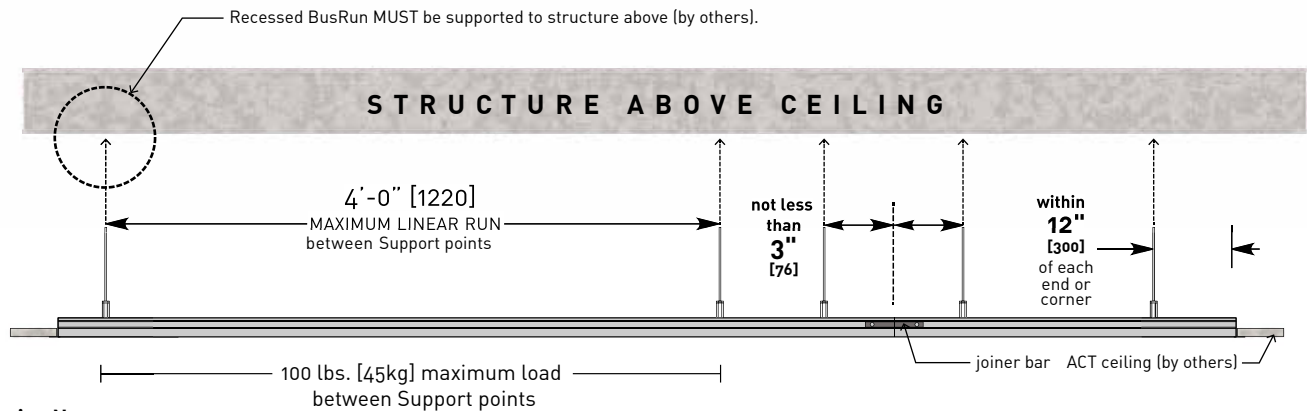


**Retaining Clip** for ceiling system

TBC-IT-01 (included)



**Mounting Diagram**



**Mounting Notes:**

**10'-0"** [3048] Recessed BusRun section requires **3** support points.

**8'-0"** [2438] Recessed BusRun section requires **3** support points.

**4'-0"** [1219] Recessed BusRun section requires **2** support points.

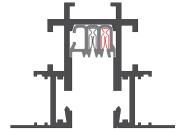
Extrusion Profile:

**BUS-11**

Mounting Condition:

**Recessed (R)**

T-BAR, TRIMMED



**Feed Options**

**TEF-11R**

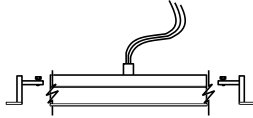
**TEC-11R (CL)**



Top End Feed:  
Whip Style  
1/2" NPSM or 20mm  
top conduit

**Max Load**  
60 amp at 12v, 120v,  
240v, 277v

**TCF-11R**

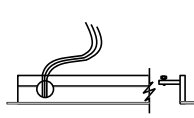


Top Center Feed:  
Whip Style  
1/2" NPSM or 20mm  
top conduit

**Max Load**  
60 amp at 12v, 120v,  
240v, 277v

**SEF-11R**

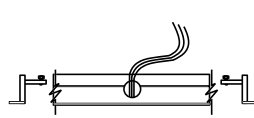
**SEC-11R (CL)**



Side End Feed:  
Whip Style  
1/2" NPSM or 20mm  
top conduit

**Max Load**  
60 amp at 12v, 120v,  
240v, 277v

**SCF-11R**

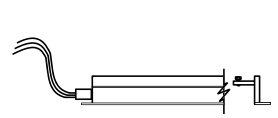


Side Center Feed:  
Whip Style  
1/2" NPSM or 20mm  
top conduit

**Max Load**  
60 amp at 12v, 120v,  
240v, 277v

**EEF-11R**

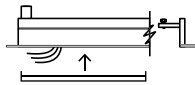
**EEC-11R (CL)**



Top End Feed:  
Whip Style  
1/2" NPSM or 20mm  
top conduit

**Max Load**  
60 amp at 12v, 120v,  
240v, 277v

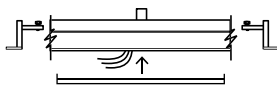
**TEB-11R**



Top End Feed:  
Splice Box Style  
1/2" NPSM or 20mm  
top conduit

**Max Load**  
30 amp at 120v, or  
16 amp at 240v

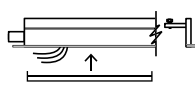
**TCB-11R**



Top Center Feed:  
Splice Box Style  
1/2" NPSM or 20mm  
top conduit

**Max Load**  
30 amp at 120v, or  
16 amp at 240v

**EEB-11R**



Top End Feed:  
Splice Box Style  
1/2" NPSM or 20mm  
top conduit

**Max Load**  
30 amp at 120v, or  
16 amp at 240v

**Notes:**

1. All Splice Box feeds are 30 amp max load.
2. All feeds are supplied with two end caps.
3. Feeds cannot be modified.
4. Feeds can be made 10" to 120" long.
5. Maximum loads are per circuit.