



Mounting Rules

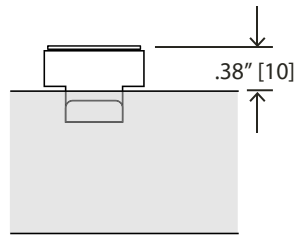
12"
[300] A support point must be provided within 12" of every end or corner of the BusRun layout.

5'-0"
[1524] Maximum distance between support points cannot exceed 5'-0" linear feet of 'surface' BusRun Busway.

3"
[76] Support points cannot be within 3" from the centerline on both sides of BusRun joints.

100lb
[45kg] BusRun Busway and mounting hardware are rated for a total supported weight up to 100lbs [45kg] between Support points.

Mounting Options

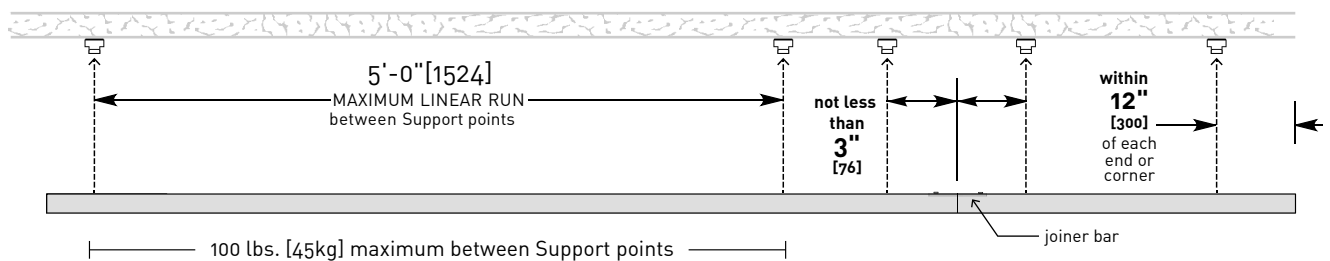


Surface Clip

Stainless steel spring clip with mounting hole and washer to protect finished ceiling as clip is rotated into BusRun mounting channel. (Included)

B-HS3 (dozen)

Mounting Diagram

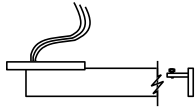




Feed Options

CEF-09S

CEC-09S (CL)

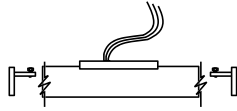


Canopy End Feed:
6.75" dia canopy

Max Load

60 amp at 12v, 120v,
240v, 277v

CCF-09S



Canopy Center Feed:
6.75" dia canopy

Max Load

60 amp at 12v, 120v,
240v, 277v

EEF-09S

EEC-09S (CL)



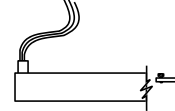
End End Feed:
Whip Style
3/4" NPSM
end conduit

Max Load

60 amp at 12v, 120v,
240v, 277v

TEF-09S

TEC-09S (CL)

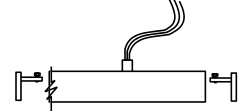


Top End Feed:
Whip Style
3/4" NPSM
top conduit

Max Load

60 amp at 12v, 120v,
240v, 277v

TCF-09S



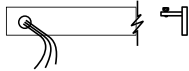
Top Center Feed:
Whip Style
3/4" NPSM
top conduit

Max Load

60 amp at 12v, 120v,
240v, 277v

SEF-09S

SEC-09S (CL)

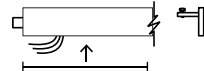


Side End Feed:
3/4" NPSM
side conduit

Max Load

60 amp at 12v, 120v,
240v, 277v
*CL

EEB-09S

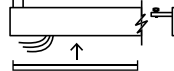


End End Feed:
Splice Box Style
3/4" NPSM
end conduit

Max Load

30 amp at 120v, or
16 amp at 240v

TEB-09S

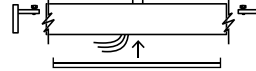


Top End Feed:
Splice Box Style
3/4" NPSM
top conduit

Max Load

30 amp at 120v, or
16 amp at 240v

TCB-09S



Top Center Feed:
Splice Box Style
3/4" NPSM
top conduit

Max Load

30 amp at 120v, or
16 amp at 240v

Notes:

1. All Splice Box feeds are 30 amp max load.
2. All feeds are supplied with two end caps.
3. Feeds cannot be modified.
4. Feeds can be made 10" to 120" long.

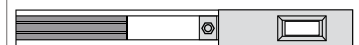
Current Limiter (CL)

(120v only)

Available Amperages

1.0A	120VA
1.5A	180VA
2.0A	240VA
3.0A	360VA
4.0A	480VA
5.0A	600VA
6.0A	720VA
8.0A	960VA
12.0A	1440VA

Side View



Reflected Plan View