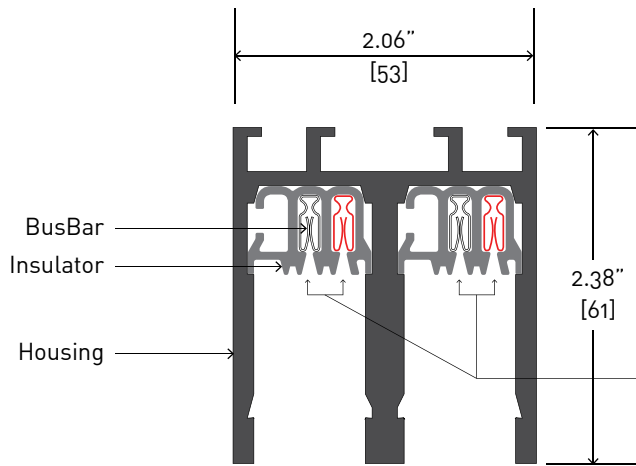


Extrusion Profile:
BUS-09

Mounting Condition:
Surface (S)
CEILING MOUNTED



Shown is two circuit BusRun. Refer to the chart below for circuiting options.

Specifications

Materials:

Extruded aluminum housing of 0.148" [3.7mm] wall thickness, with thermoplastic busbar insulator containing #6 AWG equivalent, roll-formed copper busbars.

Ratings:

Conforms to the definition of continuous plug-in busway system according to N.E.C. Article 368. UL listed for dry location, with maximum ambient temperature of 40°C [104°F.] #8 AWG leads, 60 amp maximum rated load per circuit, up to 300 volts, 5,000 AIA.

Mounting:

Mounting hardware included. 100lb [45.4kg] maximum static load between Support points. Mounting hardware must be attached to the structure to sufficiently support load.

Vinyl/Voltage Options [select one per channel]

<input type="checkbox"/> 1A BUS-09S1A 1 circ. (120V) 1-hot, 1-neutral 	<input type="checkbox"/> 2A BUS-09S2A 2 circ. (120V) 2-hot, 1-neutral 	<input type="checkbox"/> 3D BUS-09S3D 1 circ. (240V) 1-hot, 1-neutral 	<input type="checkbox"/> 2D BUS-09S2D 2 circ. (240V) 2-hot, 1-neutral 	<input type="checkbox"/> 3C BUS-09S3C 1 circ. (277V) 1-hot, 1-neutral
<input type="checkbox"/> 4B BUS-09S4B 1 circ. (12V) 1-hot, 1-neutral 	<input type="checkbox"/> 4K BUS-09S4K 1 circ. (12V INT'L) 1-hot, 1-neutral 	<input type="checkbox"/> 6A BUS-09S6A 1 circ. (120V) 2-hot, 1-neutral tied hots 	<input type="checkbox"/> 6D BUS-09S6D 1 circ. (240V) 2-hot, 1-neutral tied hots 	

Amperage Options

<input type="checkbox"/> 1 16 AMP (240V)	<input type="checkbox"/> 2 20 AMP	<input type="checkbox"/> 3 30 AMP	<input type="checkbox"/> 6 60 AMP
--	--	--	--

Color Options

<input type="checkbox"/> MB Black	<input type="checkbox"/> P White	<input type="checkbox"/> NT Brushed Aluminum	<input type="checkbox"/> UF Unfinished Mill	<input type="checkbox"/> CP Custom Finish
---	--	--	---	---

Model Number Guide

To build a BusRun model number - fill in the boxes below based on your selections from above.

Example: **B U S - 0 9 S 1 A 1 A 6 - . M B -**

This model number represents extrusion Bus 09, a surface mounting condition, 2-circuit-120V, 60 amps and color black.

Specify: **B U S - 0 9 S**

VINYL/VOLTAGE CHANNEL 1 VINYL/VOLTAGE CHANNEL 2 AMPS LENGTH IN INCHES IF KNOWN COLOR



Extrusion Profile: **BUS-09** | Mounting Condition: **Surface (S)**



Mounting Rules

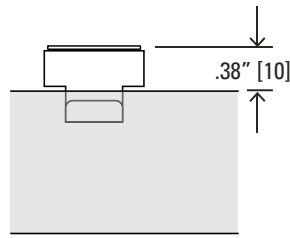
12" [300] A support point must be provided within 12" of every end or corner of the BusRun layout.

5'-0" [1524] Maximum distance between support points cannot exceed 5'-0" linear feet of 'surface' BusRun Busway.

3" Support points cannot be within 3" from the centerline on both sides of BusRun joints.

100lb [45kg] BusRun Busway and mounting hardware are rated for a total supported weight up to 100lbs [45kg] between Support points.

Mounting Options

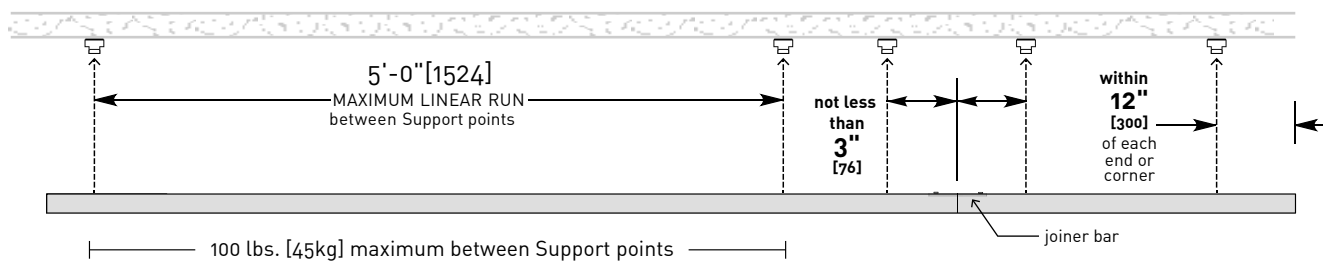


Surface Clip

Stainless steel spring clip with mounting hole and washer to protect finished ceiling as clip is rotated into BusRun mounting channel. (Included)

B-HS3 (dozen)

Mounting Diagram



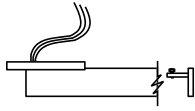
Extrusion Profile:
BUS-09

Mounting Condition:
Surface (S)



Feed Options

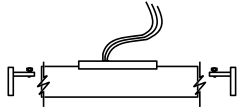
- CEF-09S
- CEC-09S (CL)



Canopy End Feed:
6.75" dia canopy

Max Load
60 amp at 12v, 120v,
240v, 277v

- CCF-09S



Canopy Center Feed:
6.75" dia canopy

Max Load
60 amp at 12v, 120v,
240v, 277v

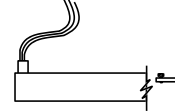
- EEF-09S
- EEC-09S (CL)



End End Feed:
Whip Style
3/4" NPSM
end conduit

Max Load
60 amp at 12v, 120v,
240v, 277v

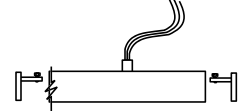
- TEF-09S
- TEC-09S (CL)



Top End Feed:
Whip Style
3/4" NPSM
top conduit

Max Load
60 amp at 12v, 120v,
240v, 277v

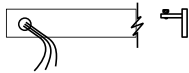
- TCF-09S



Top Center Feed:
Whip Style
3/4" NPSM
top conduit

Max Load
60 amp at 12v, 120v,
240v, 277v

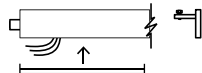
- SEF-09S
- SEC-09S (CL)



Side End Feed:
3/4" NPSM
side conduit

Max Load
60 amp at 12v, 120v,
240v, 277v
*CL

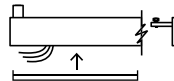
- EEB-09S



End End Feed:
Splice Box Style
3/4" NPSM
end conduit

Max Load
30 amp at 120v, or
16 amp at 240v

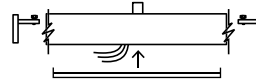
- TEB-09S



Top End Feed:
Splice Box Style
3/4" NPSM
top conduit

Max Load
30 amp at 120v, or
16 amp at 240v

- TCB-09S



Top Center Feed:
Splice Box Style
3/4" NPSM
top conduit

Max Load
30 amp at 120v, or
16 amp at 240v

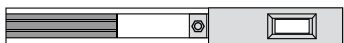
Notes:

1. All Splice Box feeds are 30 amp max load.
2. All feeds are supplied with two end caps.
3. Feeds cannot be modified.
4. Feeds can be made 10" to 120" long.

Current Limiter (CL)
(120v only)

Available Amperages	
1.0A	120VA
1.5A	180VA
2.0A	240VA
3.0A	360VA
4.0A	480VA
5.0A	600VA
6.0A	720VA
8.0A	960VA
12.0A	1440VA

Side View



Reflected Plan View