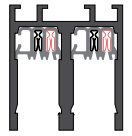




Extrusion Profile: **BUS-09** | Mounting Condition: **Surface (S)**



**Mounting Rules**

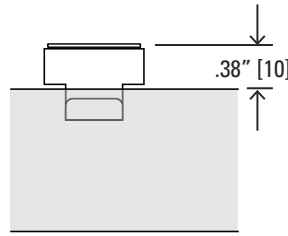
**12" [300]** A support point must be provided within 12" of every end or corner of the BusRun layout.

**5'-0" [1524]** Maximum distance between support points cannot exceed 5'-0" linear feet of 'surface' BusRun Busway.

**3"** Support points cannot be within 3" from the centerline on both sides of BusRun joints.

**100lb [45kg]** BusRun Busway and mounting hardware are rated for a total supported weight up to 100lbs [45kg] between Support points.

**Mounting Options**

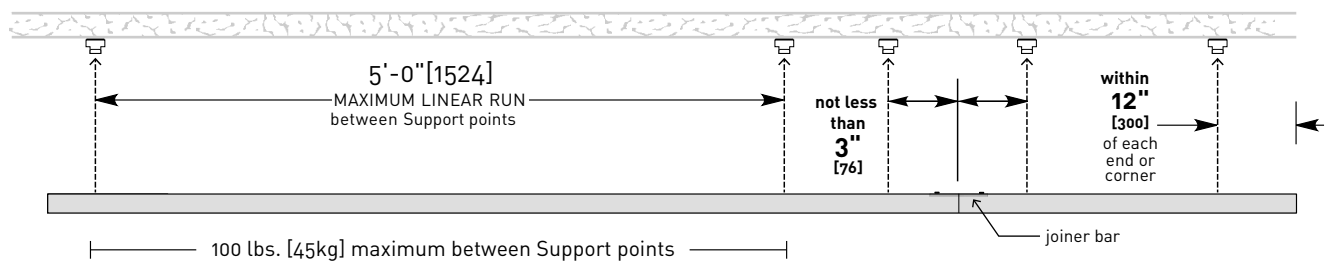


**Surface Clip**

Stainless steel spring clip with mounting hole and washer to protect finished ceiling as clip is rotated into BusRun mounting channel. (Included)

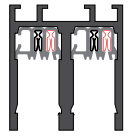
B-HS3 (dozen)

**Mounting Diagram**



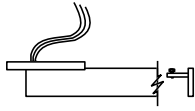
Extrusion Profile:  
**BUS-09**

Mounting Condition:  
**Surface (S)**



**Feed Options**

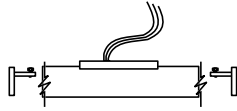
- CEF-09S
- CEC-09S (CL)



Canopy End Feed:  
6.75" dia canopy

**Max Load**  
60 amp at 12v, 120v,  
240v, 277v

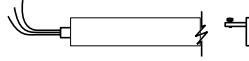
- CCF-09S



Canopy Center Feed:  
6.75" dia canopy

**Max Load**  
60 amp at 12v, 120v,  
240v, 277v

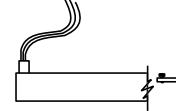
- EEF-09S
- EEC-09S (CL)



End End Feed:  
Whip Style  
3/4" NPSM  
end conduit

**Max Load**  
60 amp at 12v, 120v,  
240v, 277v

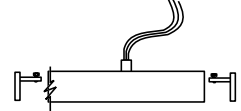
- TEF-09S
- TEC-09S (CL)



Top End Feed:  
Whip Style  
3/4" NPSM  
top conduit

**Max Load**  
60 amp at 12v, 120v,  
240v, 277v

- TCF-09S



Top Center Feed:  
Whip Style  
3/4" NPSM  
top conduit

**Max Load**  
60 amp at 12v, 120v,  
240v, 277v

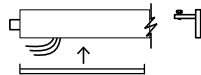
- SEF-09S
- SEC-09S (CL)



Side End Feed:  
3/4" NPSM  
side conduit

**Max Load**  
60 amp at 12v, 120v,  
240v, 277v  
\*CL

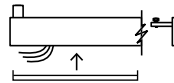
- EEB-09S



End End Feed:  
Splice Box Style  
3/4" NPSM  
end conduit

**Max Load**  
30 amp at 120v, or  
16 amp at 240v

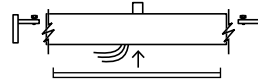
- TEB-09S



Top End Feed:  
Splice Box Style  
3/4" NPSM  
top conduit

**Max Load**  
30 amp at 120v, or  
16 amp at 240v

- TCB-09S



Top Center Feed:  
Splice Box Style  
3/4" NPSM  
top conduit

**Max Load**  
30 amp at 120v, or  
16 amp at 240v

**Notes:**

1. All Splice Box feeds are 30 amp max load.
2. All feeds are supplied with two end caps.
3. Feeds cannot be modified.
4. Feeds can be made 10" to 120" long.

**Current Limiter (CL)**  
(120v only)

Available Amperages	
1.0A	120VA
1.5A	180VA
2.0A	240VA
3.0A	360VA
4.0A	480VA
5.0A	600VA
6.0A	720VA
8.0A	960VA
12.0A	1440VA

Side View

Reflected Plan View