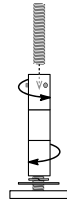




Mounting Rules

- 12" [300]** A hang-point must be provided within 12" of every end or corner of the BusRun layout.
- 10'-0" [3050]** Maximum distance between hang-points cannot exceed 10'-0" linear feet of 'hanging' BusRun Busway.
- 14"** Support points cannot be within 7" from the centerline on both sides of sleeved joints.
- 100lb [45kg]** BusRun Busway and mounting hardware are rated for a total supported weight up to 100lbs [45kg] between Support points.

Hanging Options



Threaded Rod Hanger

Nickel-plated counter-rotating threaded rod hanger and mounting bar enable attachment and leveling of BusRun to fixed threaded rod.

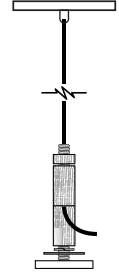
- B-HH0-TR250 for 1/4"-20 rod
- B-HH0-TR375 for 3/8"-16 rod



LevelGlide™
Gripper cable with closed eyeloop

Cable with thimble, crimped loop at top, self-locking gripper and mounting bar at bottom, provide instant and precise height adjustability.

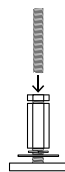
- B-HC0-060 5'[1525]
- B-HC0-120 10'[3050]
- B-HC0-180 15'[4525]



Canopy LevelGlide™
Gripper, cable, and canopy

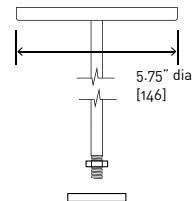
Cable with swivel coupler at top, self-locking gripper and mounting bar at bottom, provide instant and precise height adjustability. 5" dia canopy mounts to ceiling.

- B-HC0-060-C 5'
- B-HC0-120-C 10'
- B-HC0-180-C 15'



Coupling Nut
for threaded rod

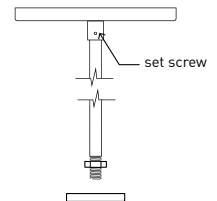
- B-HH0-CK-M6-01 for M6 rod



Support Pendant

5.75" canopy, stem and hex nut. Mounting bar supplied. Provides 18" height between bottom of Bus and ceiling.

- B-HP0D-18 18"[457]

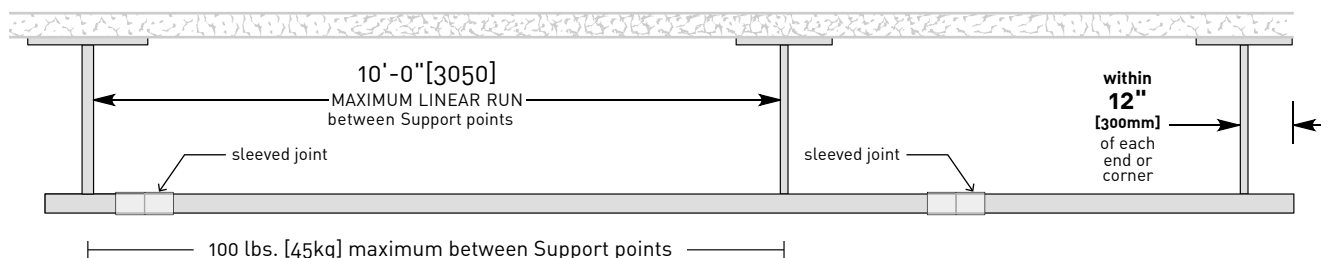


Field Cuttable Support Pendant

5.0" canopy, stem and hex nut. Mounting bar supplied. Stem is field cuttable and secured with set screw at canopy.

- B-HP0-24-FC 2'[600]
- B-HP0-48-FC 4'[1200]

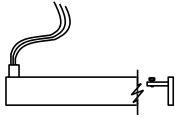
Mounting Diagram





Feed Options

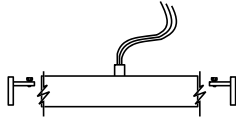
- TEF-09H
- TEC-09H (CL)



Top End Feed:
Whip Style
3/4" NPSM
top conduit

Max Load
60 amp at 12v, 120v,
240v, 277v

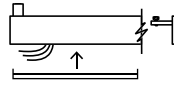
- TCF-09H



Top Center Feed:
Whip Style
3/4" NPSM
top conduit

Max Load
60 amp at 12v, 120v,
240v, 277v

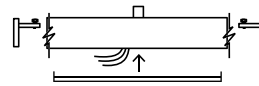
- TEB-09H



Top End Feed:
Splice Box Style
3/4" NPSM
top conduit

Max Load
30 amp at 120v, or
16 amp at 240v

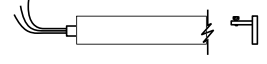
- TCB-09H



Top Center Feed:
Splice Box Style
3/4" NPSM
top conduit

Max Load
30 amp at 120v, or
16 amp at 240v

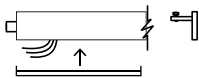
- EEF-09H
- EEC-09H (CL)



End End Feed:
Whip Style
3/4" NPSM
end conduit

Max Load
60 amp at 12v, 120v,
240v, 277v

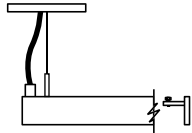
- EEB-09H



End End Feed:
Splice Box Style
3/4" NPSM
end conduit

Max Load
30 amp at 120v, or
16 amp at 240v

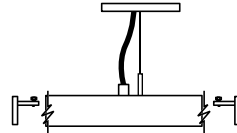
- AEF-09H
- AEC-09H (CL)



Top End Feed:
Cable Style
5.0" dia canopy

Max Load
20 amp at 120v, or
16 amp at 240v

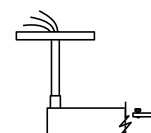
- ACF-09H



Top Center Feed:
Cable Style
5.0" dia canopy

Max Load
20 amp at 120v, or
16 amp at 240v

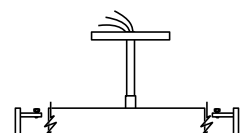
- PEF-09H
- PEC-09H (CL)



Pendant End Feed:
6.75" dia canopy
3/4" NPSM pendant

Max Load
60 amp at 12v, 120v,
240v, 277v

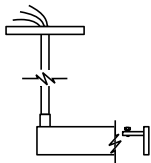
- PCF-09H



Pendant Center Feed:
6.75" dia canopy
3/4" NPSM pendant

Max Load
60 amp at 12v, 120v,
240v, 277v

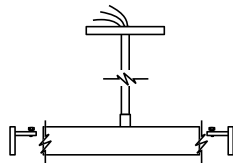
- MEF-09H
- MEC-09H (CL)



Field Cuttable
Pendant End Feed:
5.0" dia canopy
3/4" pendant

Max Load
60 amp at 12v, 120v,
240v, 277v

- MCF-09H



Field Cuttable
Pendant Center Feed:
5.0" dia canopy
3/4" pendant

Max Load
60 amp at 12v, 120v,
240v, 277v

Notes:

1. All Splice Box feeds are 30 amp max load.
2. All feeds are supplied with two end caps.
3. Feeds cannot be modified.
4. Feeds can be made 10" to 120" long.
5. Maximum loads are per circuit.

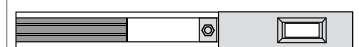
Current Limiter (CL)

(120v only)

Available Amperages

| | |
|-------|--------|
| 1.0A | 120VA |
| 1.5A | 180VA |
| 2.0A | 240VA |
| 3.0A | 360VA |
| 4.0A | 480VA |
| 5.0A | 600VA |
| 6.0A | 720VA |
| 8.0A | 960VA |
| 12.0A | 1440VA |

Side View



Reflected Plan View